

Testing Report

New Jersey Assessment of Skills and Knowledge

Grades 3-6 NJASK Testing Administered May 2011

River Edge Public Schools

River Edge, NJ

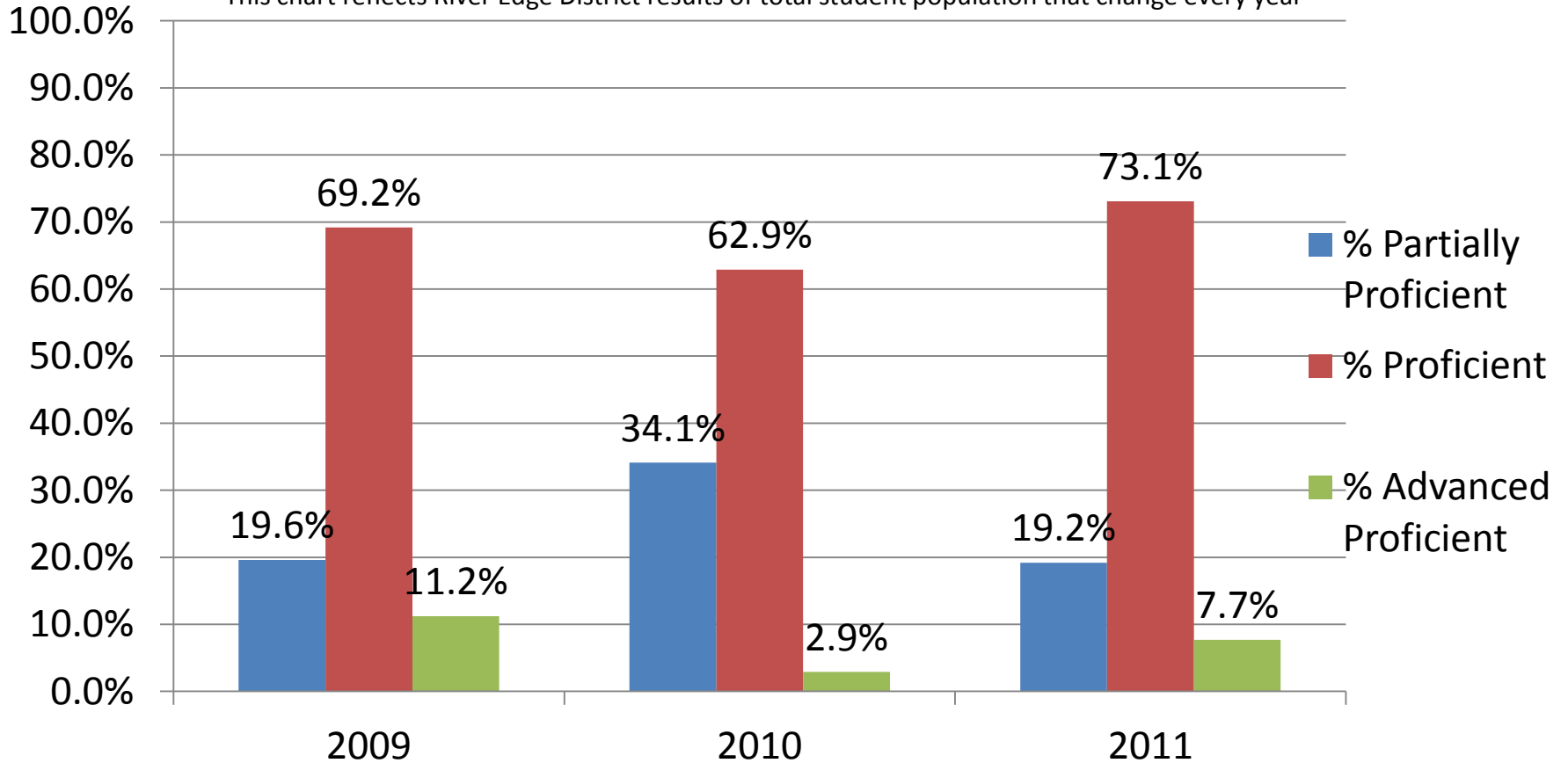
2011

New Jersey State Benchmarks for Adequate Yearly Progress Effective November 2009

Content Area	Grade Span	Starting Point 2003	2005-2007	2008-2010 % Proficient	2011-2013 % Proficient	2014 % Proficient
<i>Language Arts Literacy</i>	Elementary (Grades 3-5)	68	75	59	79	100
	Middle School (Grades 6-8)	58	66	72	86	100
	High School (Grade 11)	73	79	85	92	100
<i>Mathematics</i>	Elementary (Grades 3-5)	53	62	66	83	100
	Middle School (Grades 6-8)	39	49	61	80	100
	High School (Grade 11)	55	64	74	86	100

Grade 3 LAL

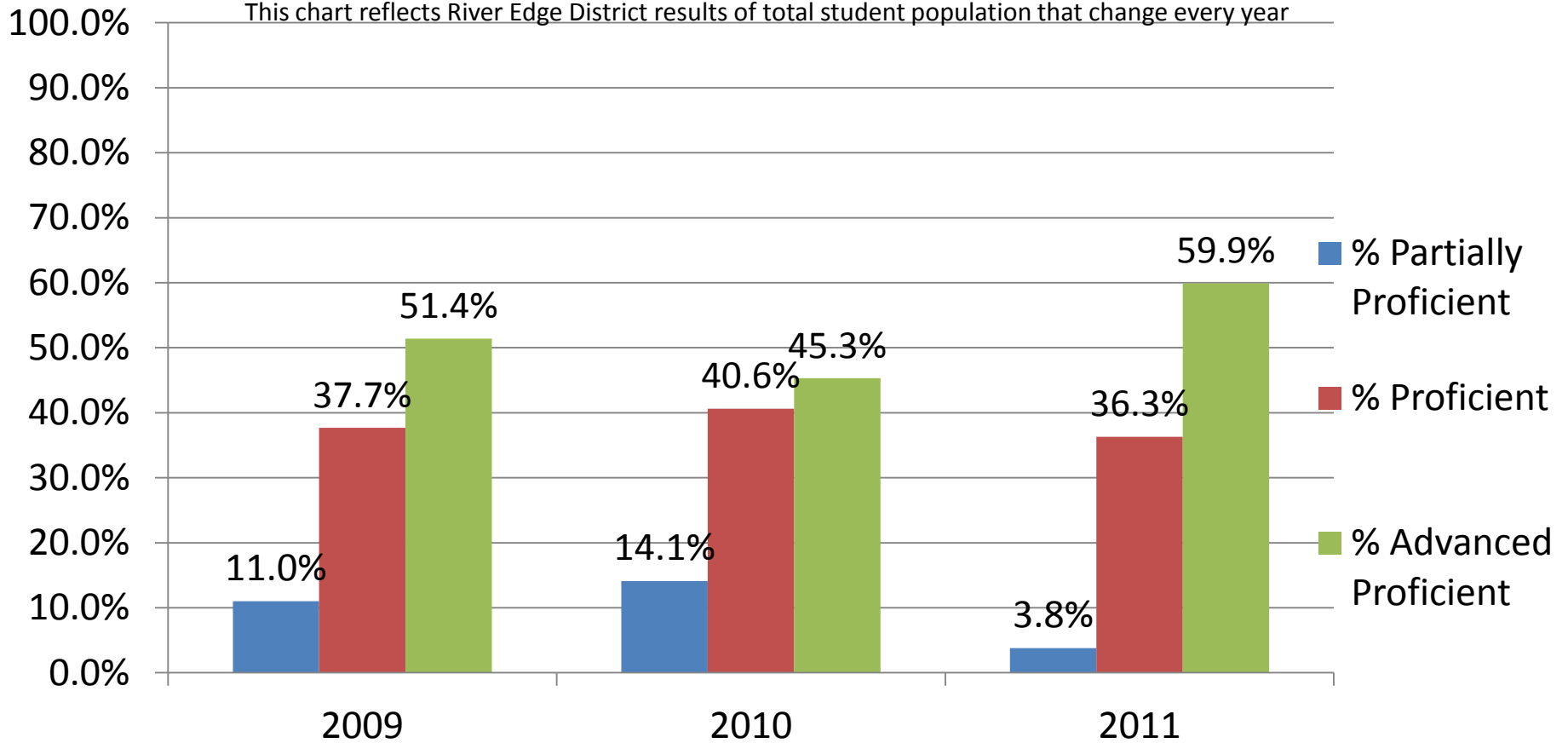
This chart reflects River Edge District results of total student population that change every year



2009	2010	2011
N= 146	N= 170	N=156
GE= 120	GE= 148	GE= 133
SE= 18	SE= 20	SE= 22
LEP= 8	LEP= 15	LEP= 2

Grade 3 Mathematics

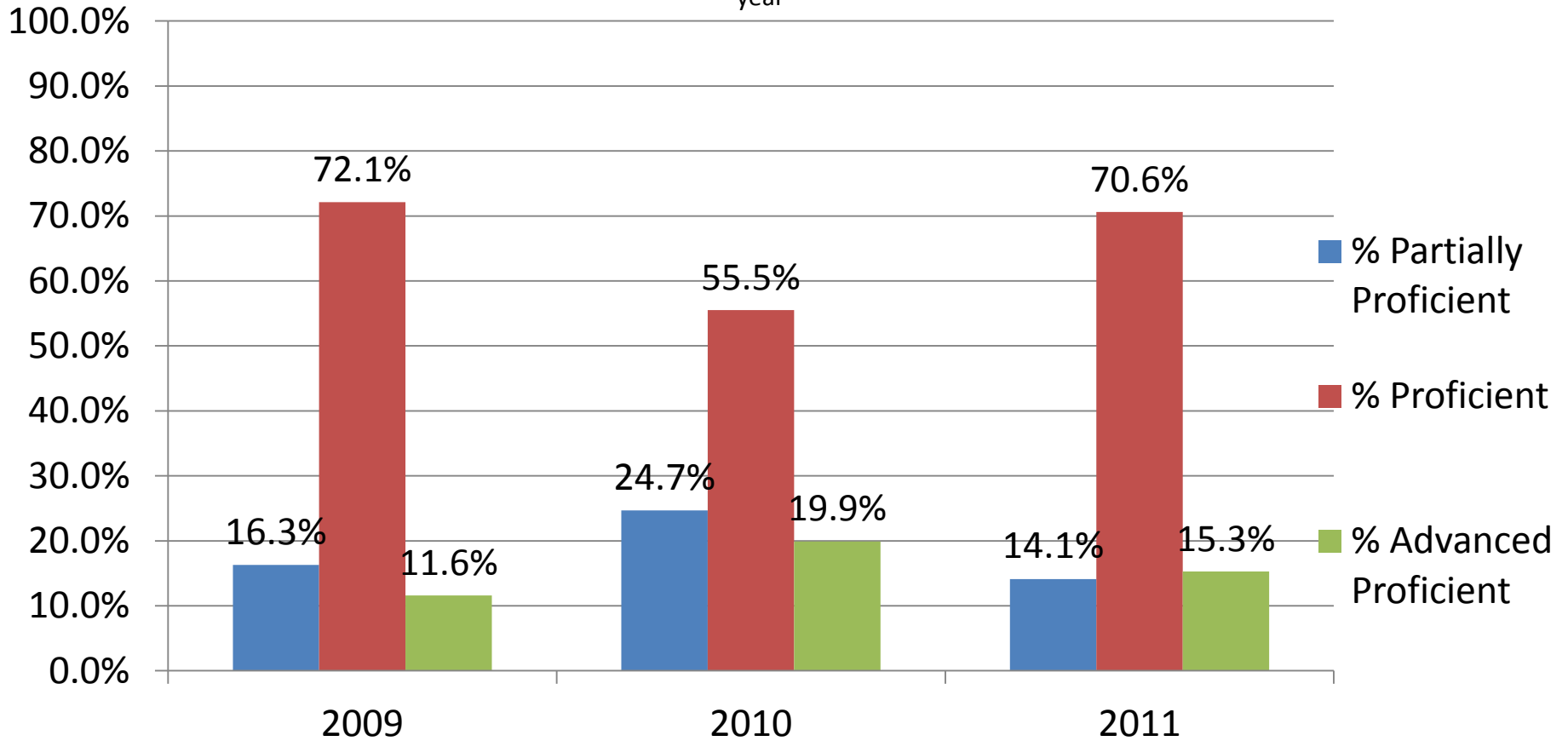
This chart reflects River Edge District results of total student population that change every year



2009	2010	2011
N= 146	N= 170	N=156
GE= 120	GE= 148	GE= 133
SE= 18	SE= 20	SE= 22
LEP= 8	LEP= 15	LEP= 2

Grade 4 LAL

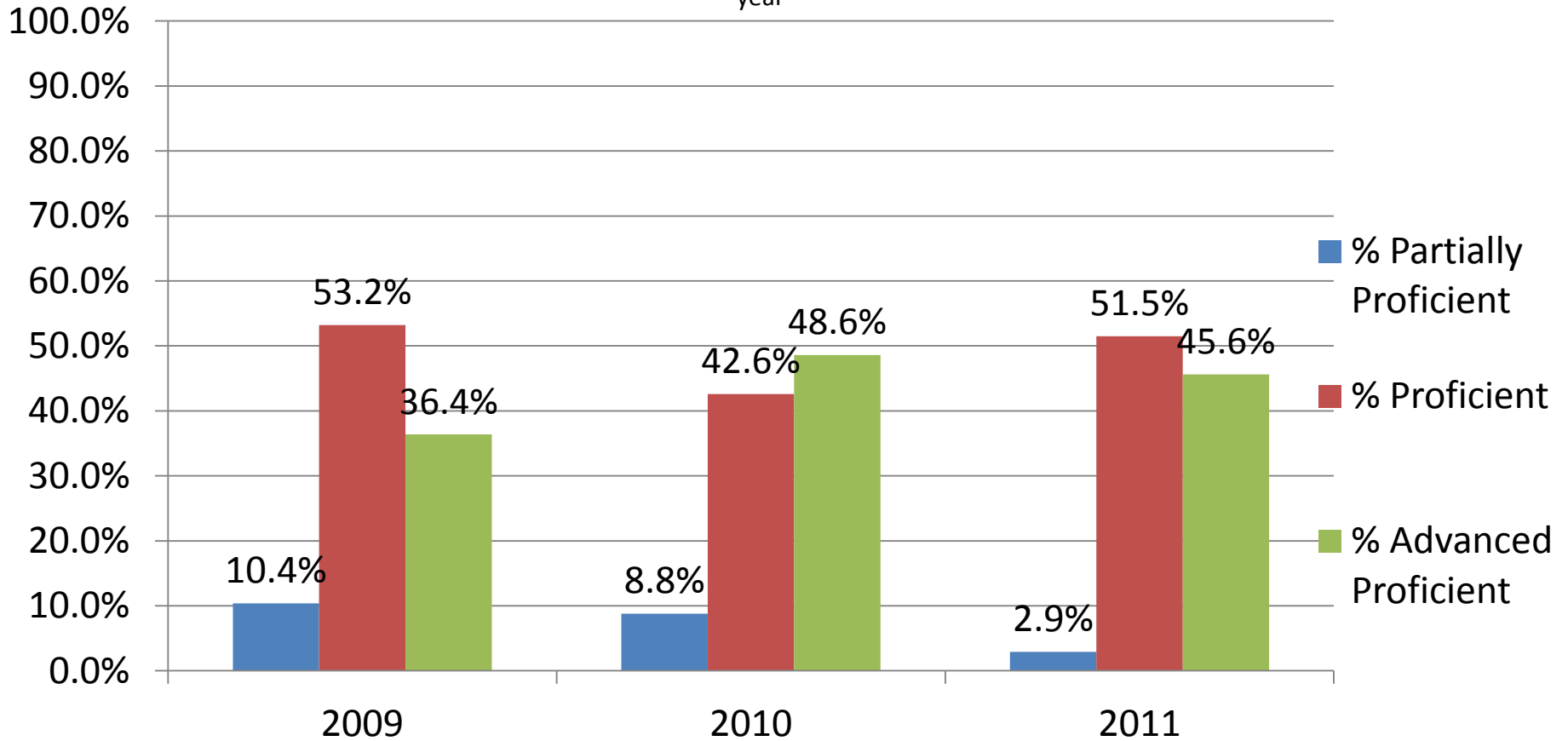
This chart reflects River Edge District results of total student population that change every year



2009	2010	2011
N= 173	N= 146	N=171
GE= 151	GE= 123	GE= 144
SE= 18	SE= 20	SE= 26
LEP= 4	LEP= 9	LEP= 1

Grade 4 Mathematics

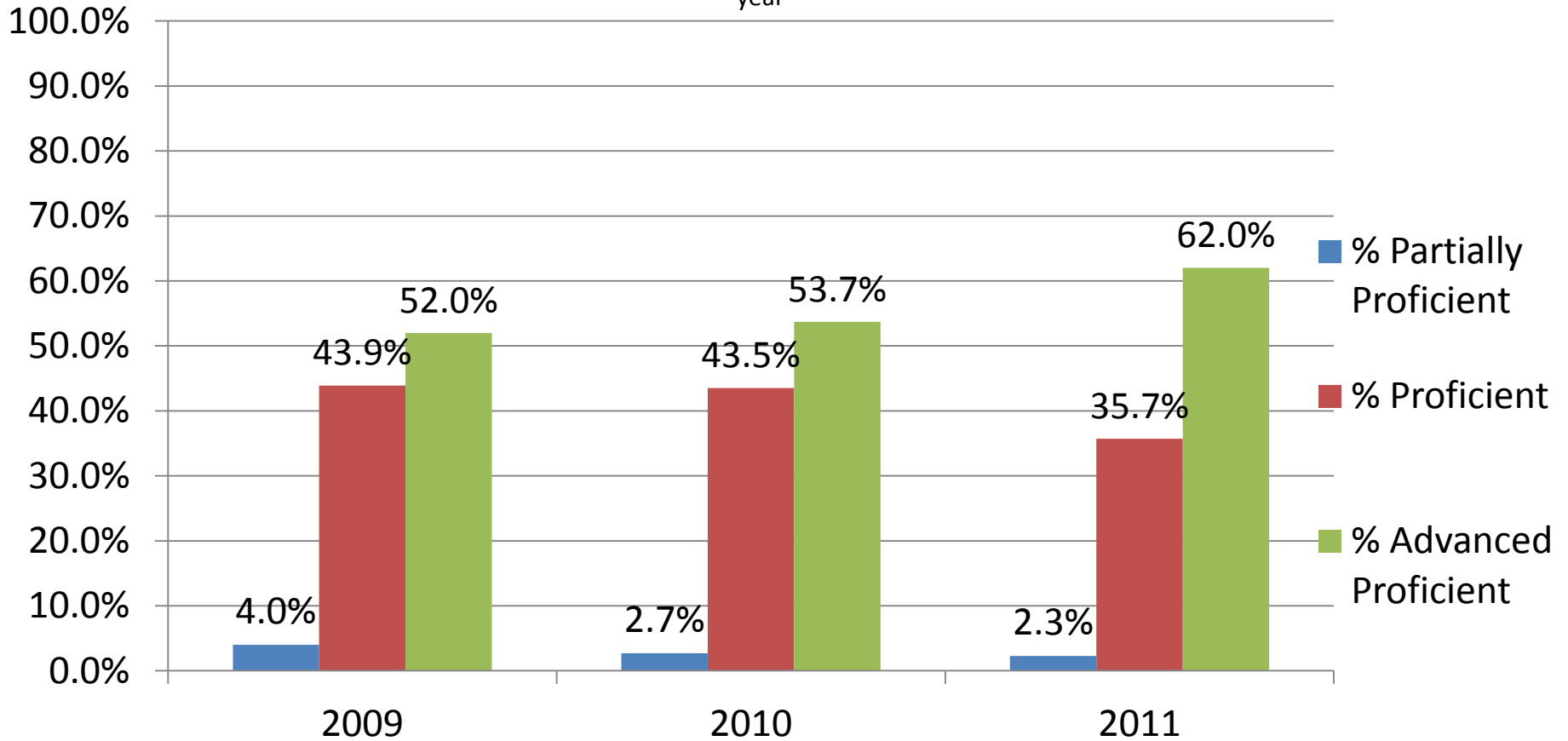
This chart reflects River Edge District results of total student population that change every year



2009	2010	2011
N= 173	N= 146	N=171
GE= 151	GE= 123	GE= 144
SE= 18	SE= 20	SE= 26
LEP= 4	LEP= 9	LEP= 1

Grade 4 Science

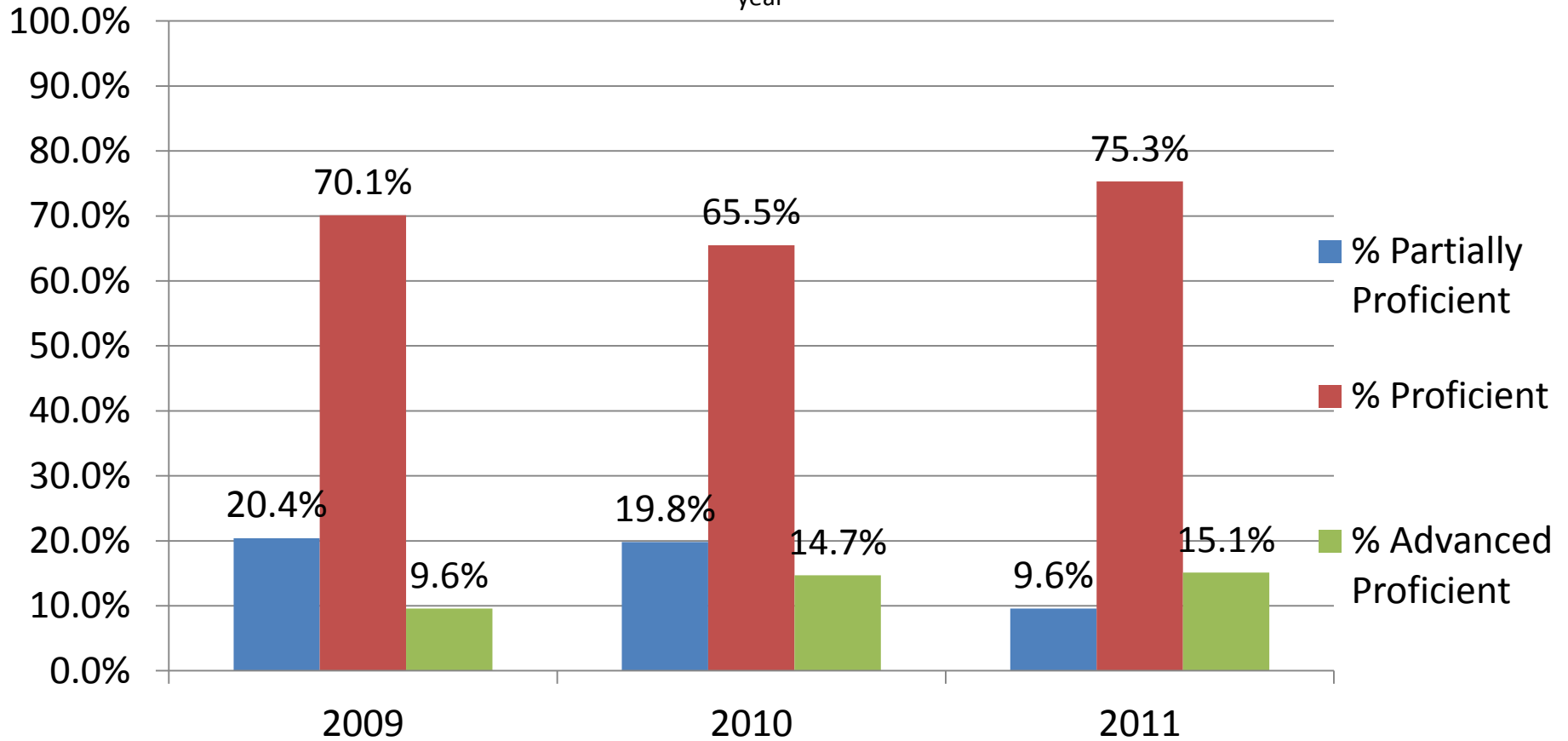
This chart reflects River Edge District results of total student population that change every year



2009	2010	2011
N= 173	N= 146	N=171
GE= 151	GE= 123	GE= 144
SE= 18	SE= 20	SE= 26
LEP= 4	LEP= 9	LEP= 1

Grade 5 LAL

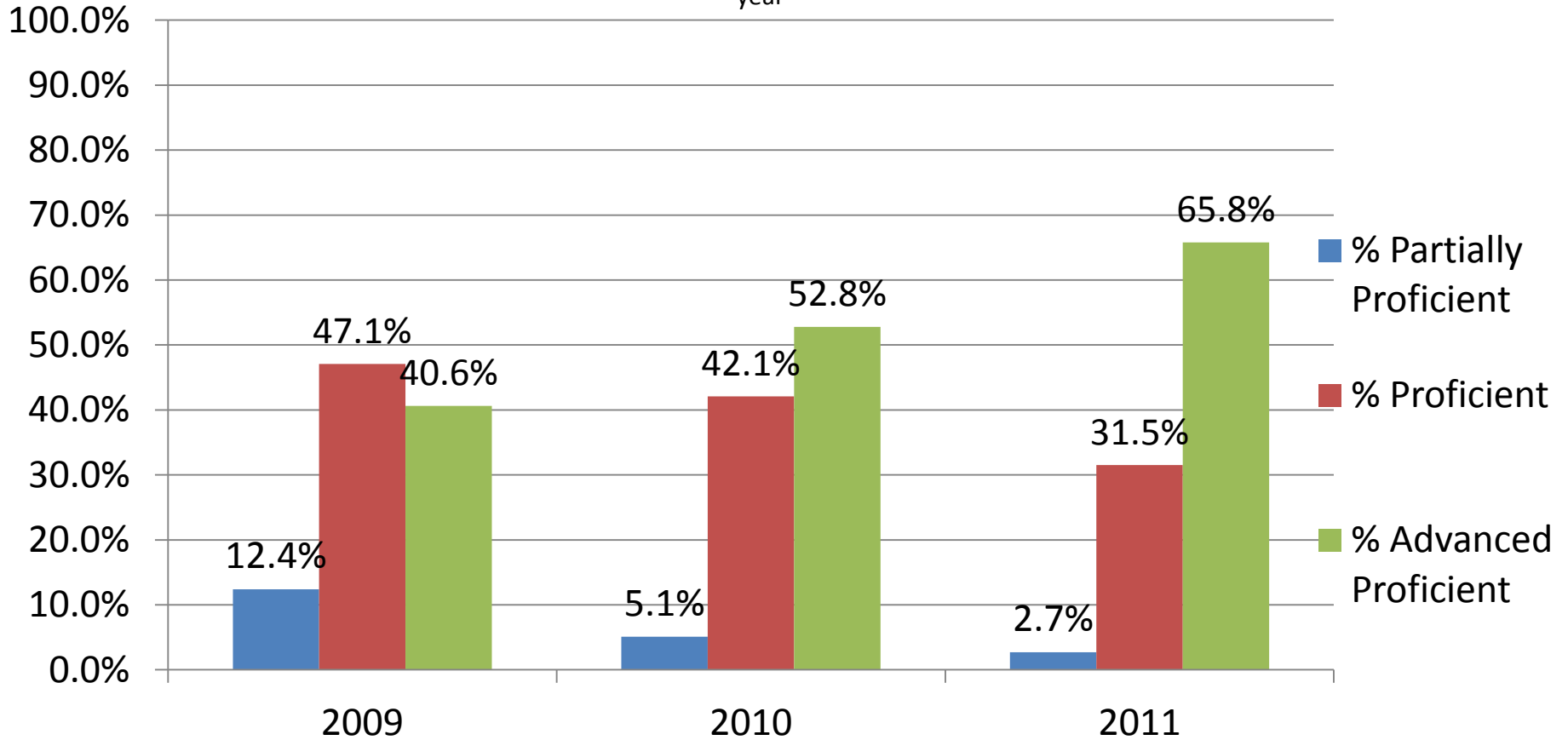
This chart reflects River Edge District results of total student population that change every year



2009	2010	2011
N= 170	N= 177	N=146
GE= 138	GE= 160	GE= 123
SE= 24	SE= 16	SE= 22
LEP= 8	LEP= 6	LEP= 1

Grade 5 Mathematics

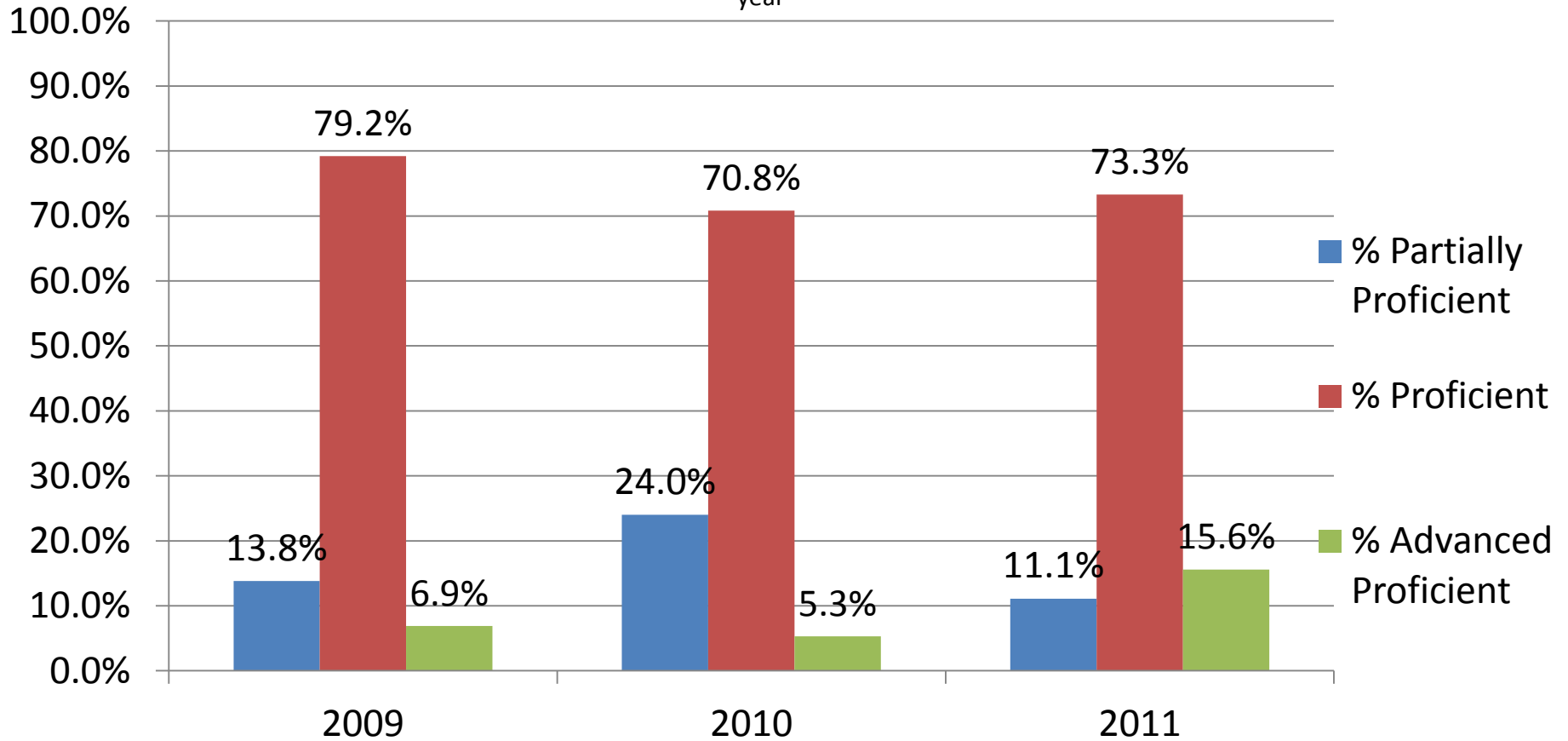
This chart reflects River Edge District results of total student population that change every year



2009	2010	2011
N= 170	N= 177	N=146
GE= 138	GE= 160	GE= 123
SE= 24	SE= 16	SE= 22
LEP= 8	LEP= 6	LEP= 1

Grade 6 LAL

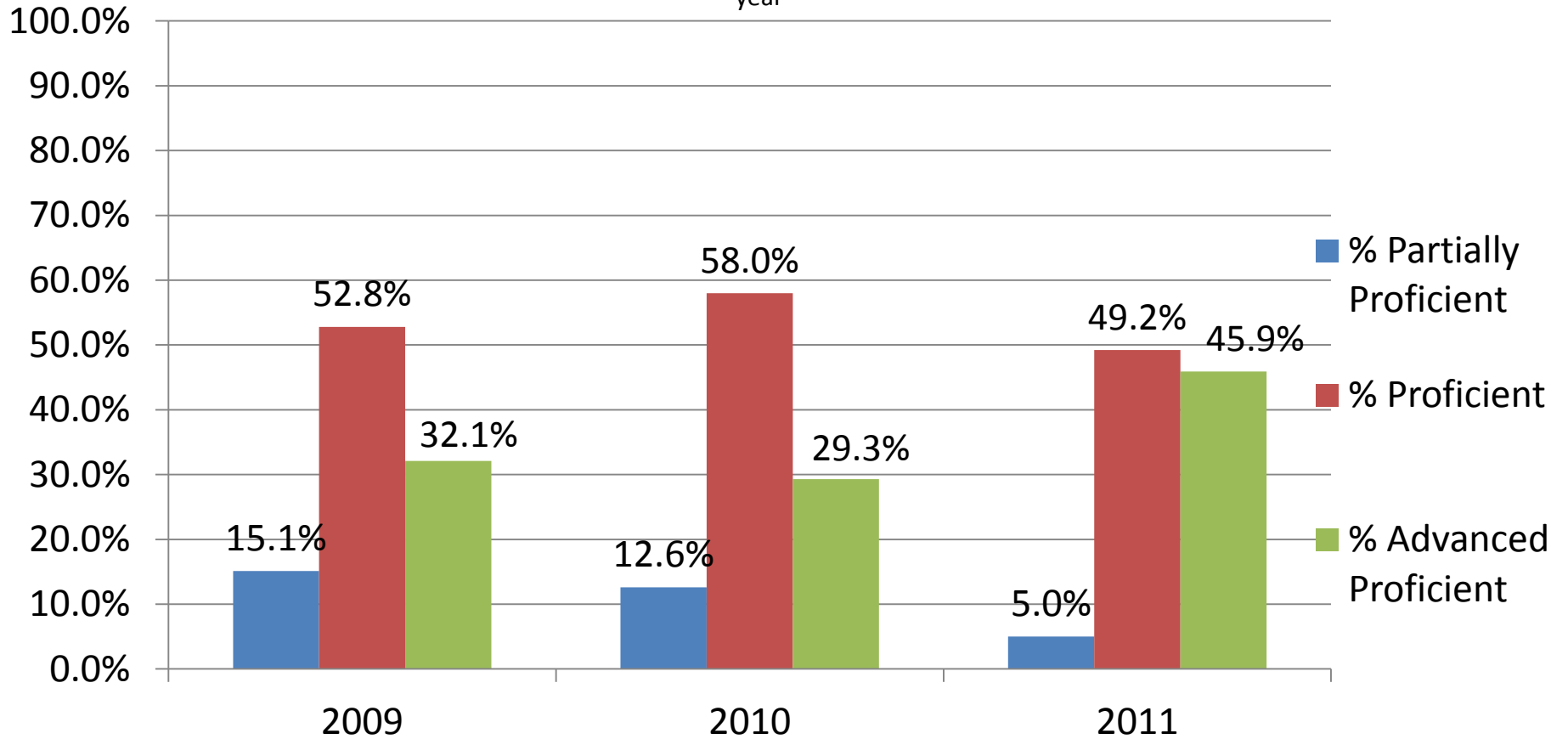
This chart reflects River Edge District results of total student population that change every year



2009	2010	2011
N= 159	N= 171	N=180
GE= 144	GE= 144	GE= 161
SE= 15	SE= 24	SE= 18
LEP= 0	LEP= 6	LEP= 1

Grade 6 Mathematics

This chart reflects River Edge District results of total student population that change every year



2009	2010	2011
N= 159	N= 171	N=180
GE= 144	GE= 144	GE= 161
SE= 15	SE= 24	SE= 18
LEP= 0	LEP= 6	LEP= 1

Grade 6 of 2011 LAL and Math

The chart below compares the performance of the same group of students, current 7th graders

	Grade 3, Spring2008	Grade 4, Spring2009	Grade 5, Spring2010	Grade 6, Spring2011	Grade 3, Spring2008	Grade 4, Spring2009	Grade 5, Spring2010	Grade 6, Spring2011
	LAL	LAL	LAL	LAL	Math	Math	Math	Math
Partially Proficient %	4.7	16.3	19.8	11.1	9.4	10.4	5.1	5.0
Proficient %	85.4	72.1	65.5	73.3	54.4	53.2	42.1	49.2
Advanced %	9.9	11.6	14.7	15.6	36.3	36.4	52.8	45.9

Grade 3 2008	Grade 4 2009	Grade 5 2010	Grade 6 2011
N = 173	N = 173	N = 177	N = 180
GE = 160	GE = 151	GE = 160	GE = 161
SE = 10	SE = 18	SE = 16	SE = 18
LEP = 3	LEP = 4	LEP = 6	LEP = 2

Grade 5 of 2011 LAL and Math

The chart below compares the performance of the same group of students, current 6th graders

	Grade 3 2009	Grade 4 2010	Grade 5 2011	Grade 3 2009	Grade 4 2010	Grade 5 2011
	LAL	LAL	LAL	Math	Math	Math
Partially Proficient %	19.6	24.7	9.6	11.0	8.8	2.7
Proficient %	69.2	55.5	75.3	37.7	42.6	31.5
Advanced Proficient %	11.2	19.9	15.1	51.4	48.6	65.8

Grade 3 2009	Grade 4 2010	Grade 5 2011
N = 146	N = 146	N = 146
GE = 120	GE = 123	GE = 123
SE = 18	SE = 20	SE = 22
LEP = 8	LEP = 9	LEP = 1

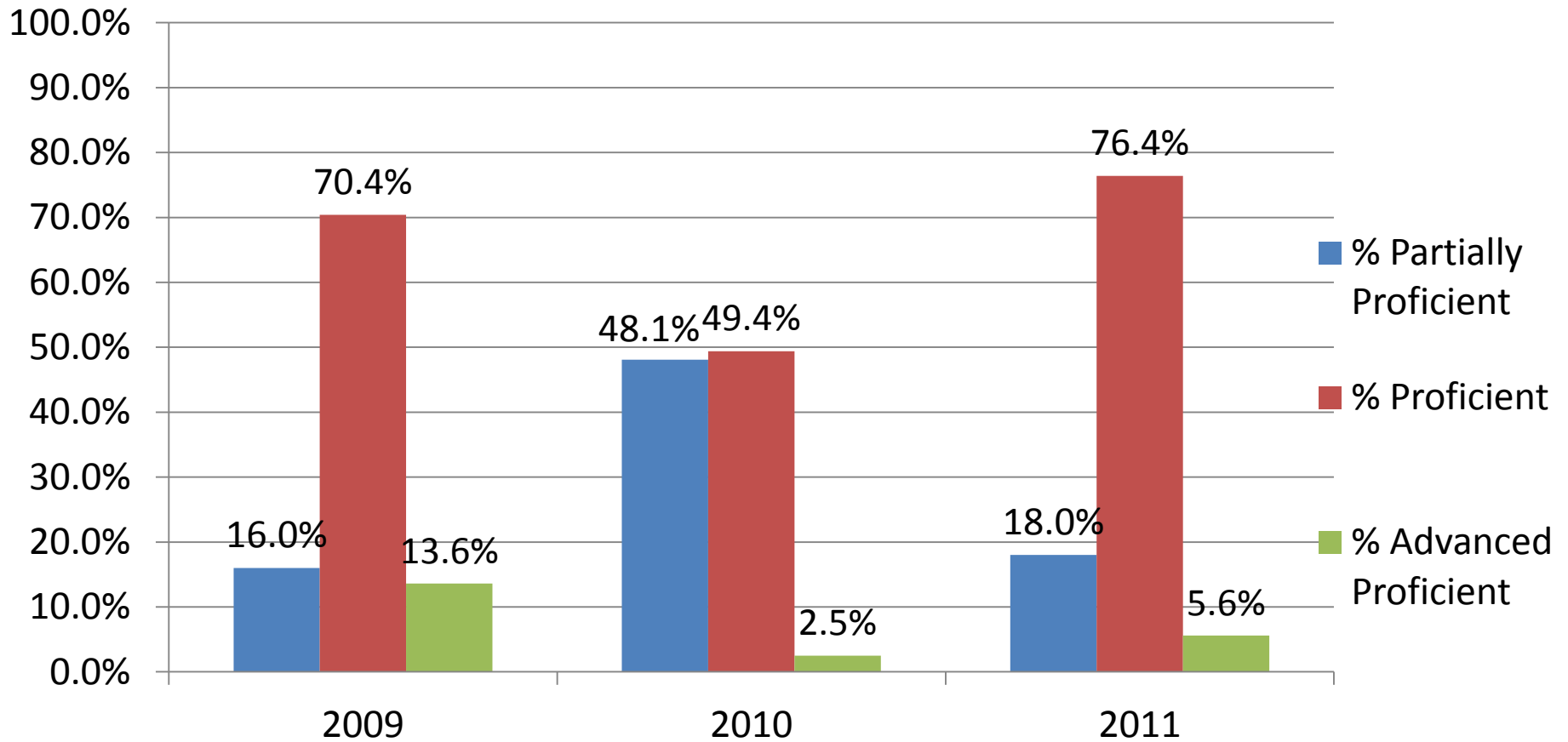
Grade 4 of 2011 LAL and Math

The chart below compares the performance of the same group of students, current 5th graders

	Grade 3 Spring 2010	Grade 4 Spring 2011	Grade 3 Spring 2010	Grade 4 Spring 2011
	LAL 2010	LAL 2011	Math 2010	Math 2011
Partially Proficient %	34.1	14.1	14.1	2.9
Proficient %	62.9	70.6	40.6	51.5
Advanced %	2.9	15.3	45.3	45.6

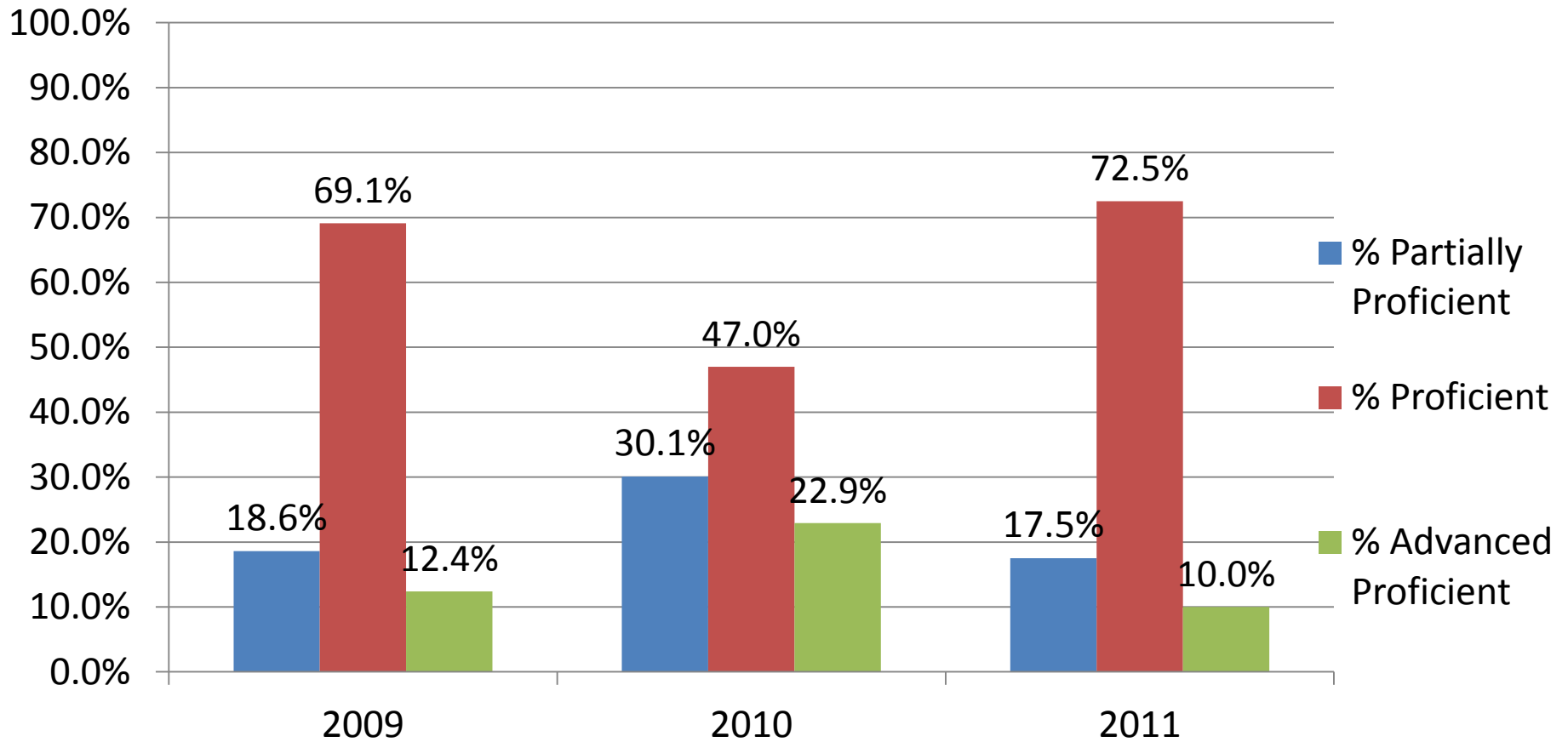
Grade 3 2010	Grade 4 2011
N = 170	N = 170
GE = 148	GE = 144
SE = 20	SE = 26
LEP = 2	LEP = 0

NJ ASK Three Year Trend Cherry Hill Grade 3 Language Arts Literacy



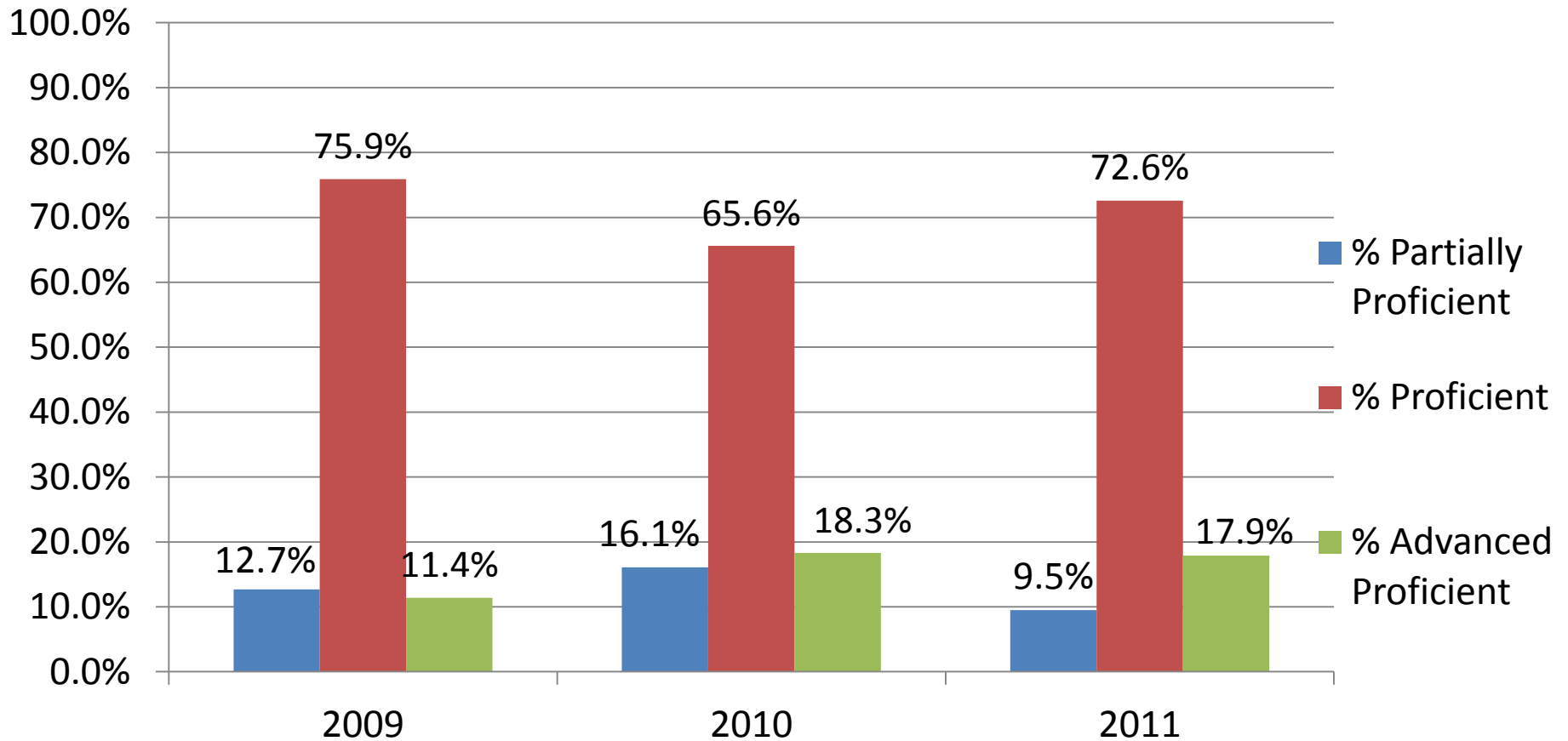
	2009	2010	2011
Partially Proficient	16.0%	48.1%	18.0%
Proficient	70.4%	49.4%	76.4%
Advanced Proficient	13.6%	2.5%	5.6%

NJ ASK Three Year Trend Cherry Hill Grade 4 Language Arts Literacy



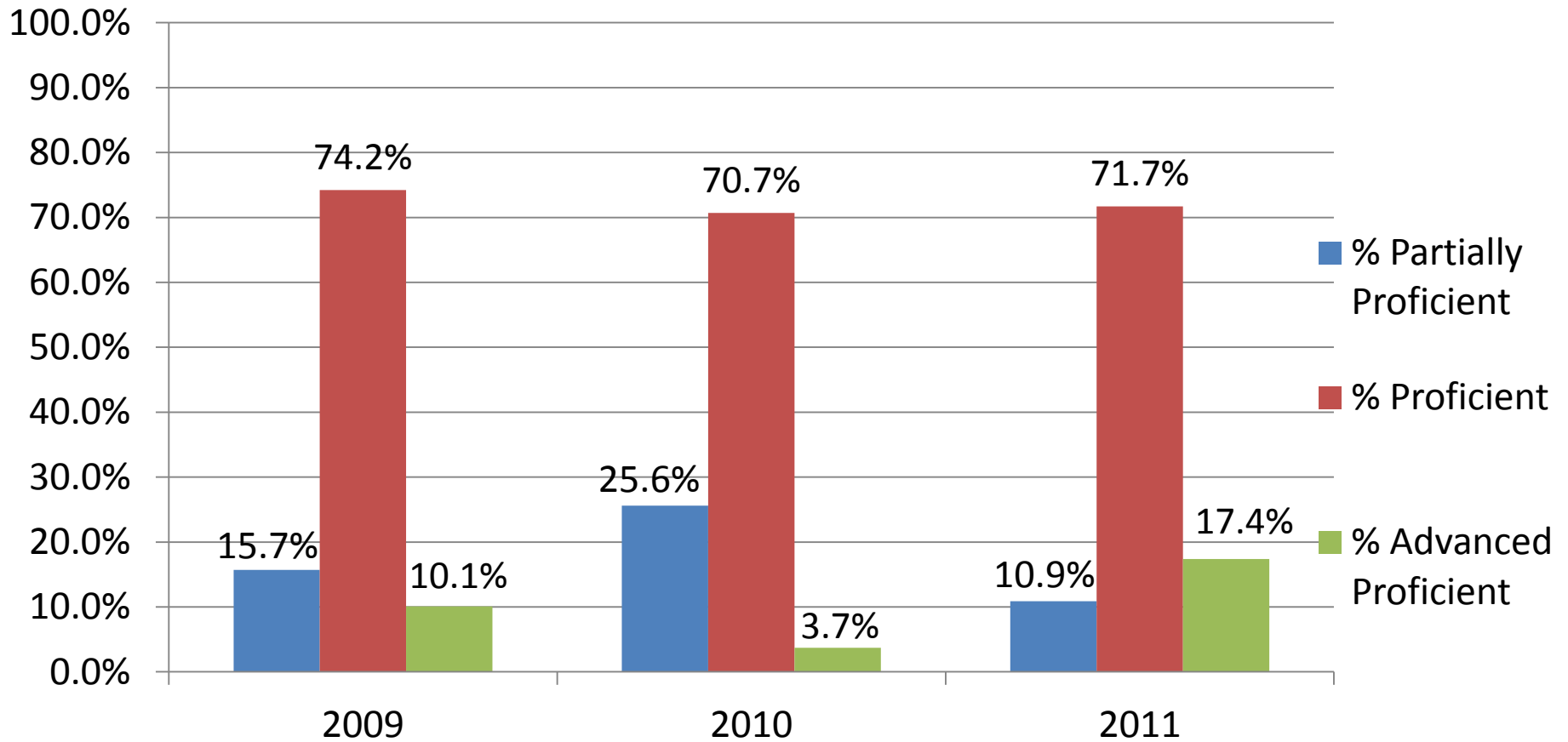
	2009	2010	2011
Partially Proficient	18.6%	30.1%	17.5%
Proficient	69.1%	47.0%	72.5%
Advanced Proficient	12.4%	22.9%	10.0%

NJ ASK Three Year Trend Cherry Hill Grade 5 Language Arts Literacy



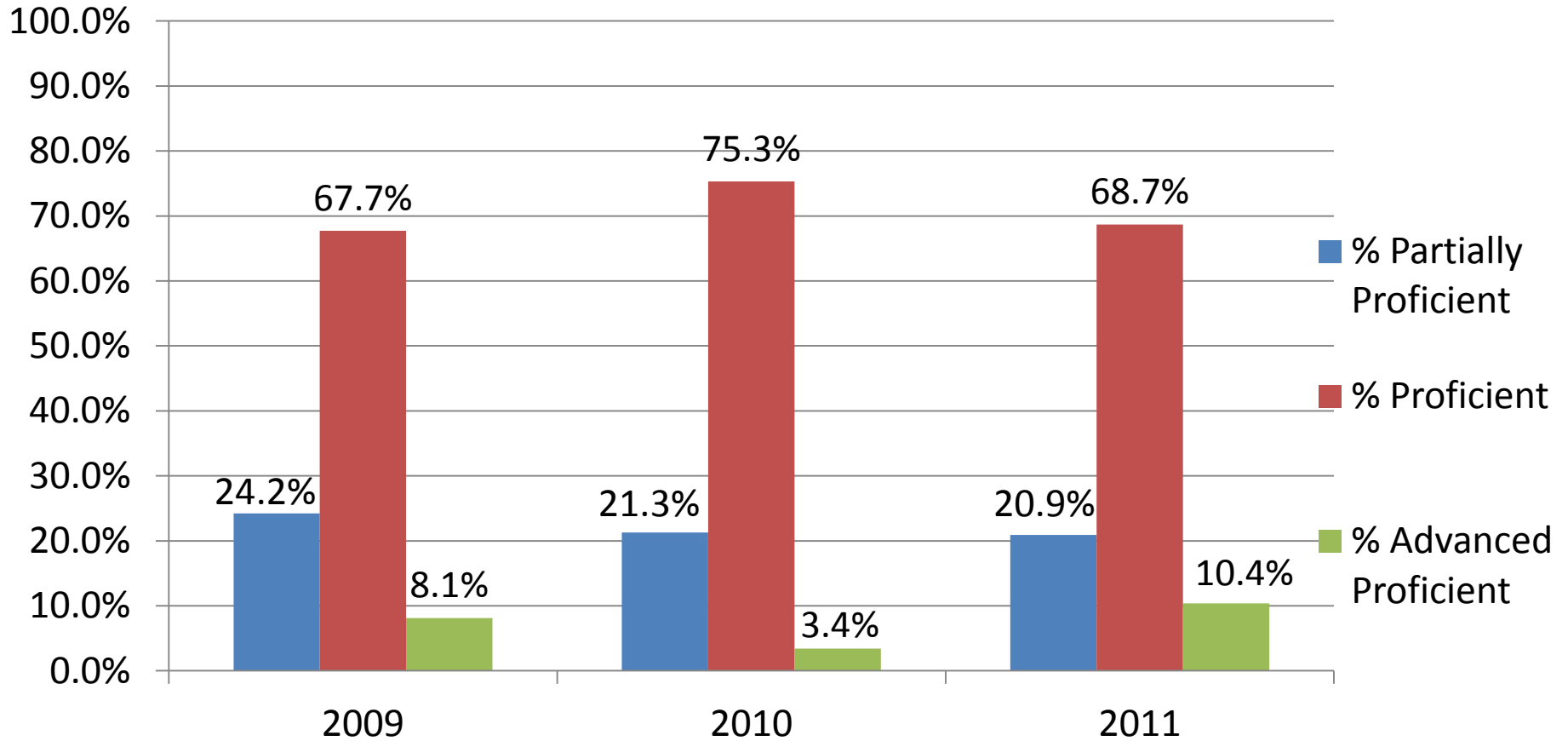
	2009	2010	2011
Partially Proficient	12.7%	16.1%	9.5%
Proficient	75.9%	65.6%	72.6%
Advanced Proficient	11.4%	18.3%	17.9%

NJ ASK Three Year Trend Cherry Hill Grade 6 Language Arts Literacy



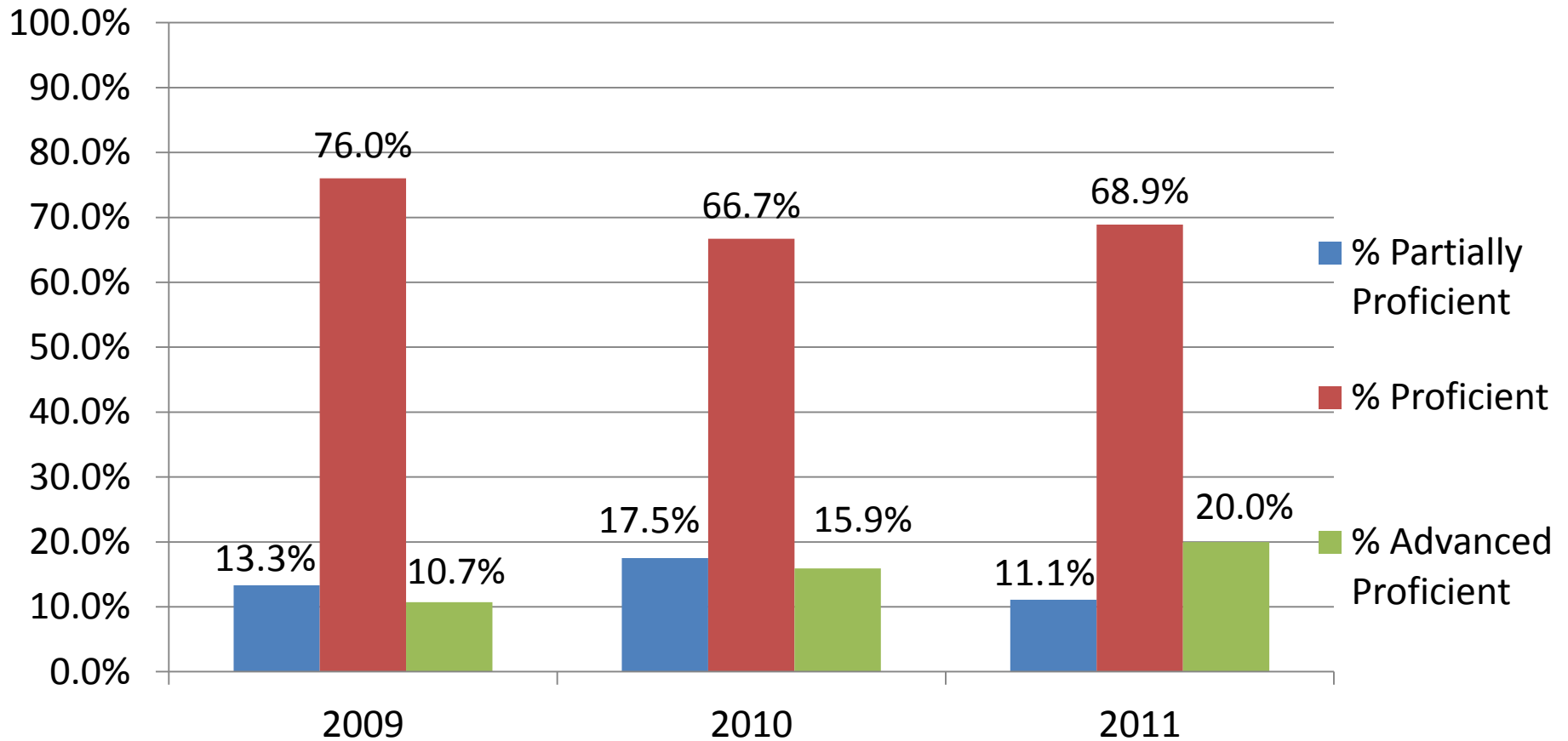
	2009	2010	2011
Partially Proficient	15.7%	25.6%	10.9%
Proficient	74.2%	70.7%	71.7%
Advanced Proficient	10.1%	3.7%	17.4%

NJ ASK Three Year Trend Roosevelt Grade 3 Language Arts Literacy



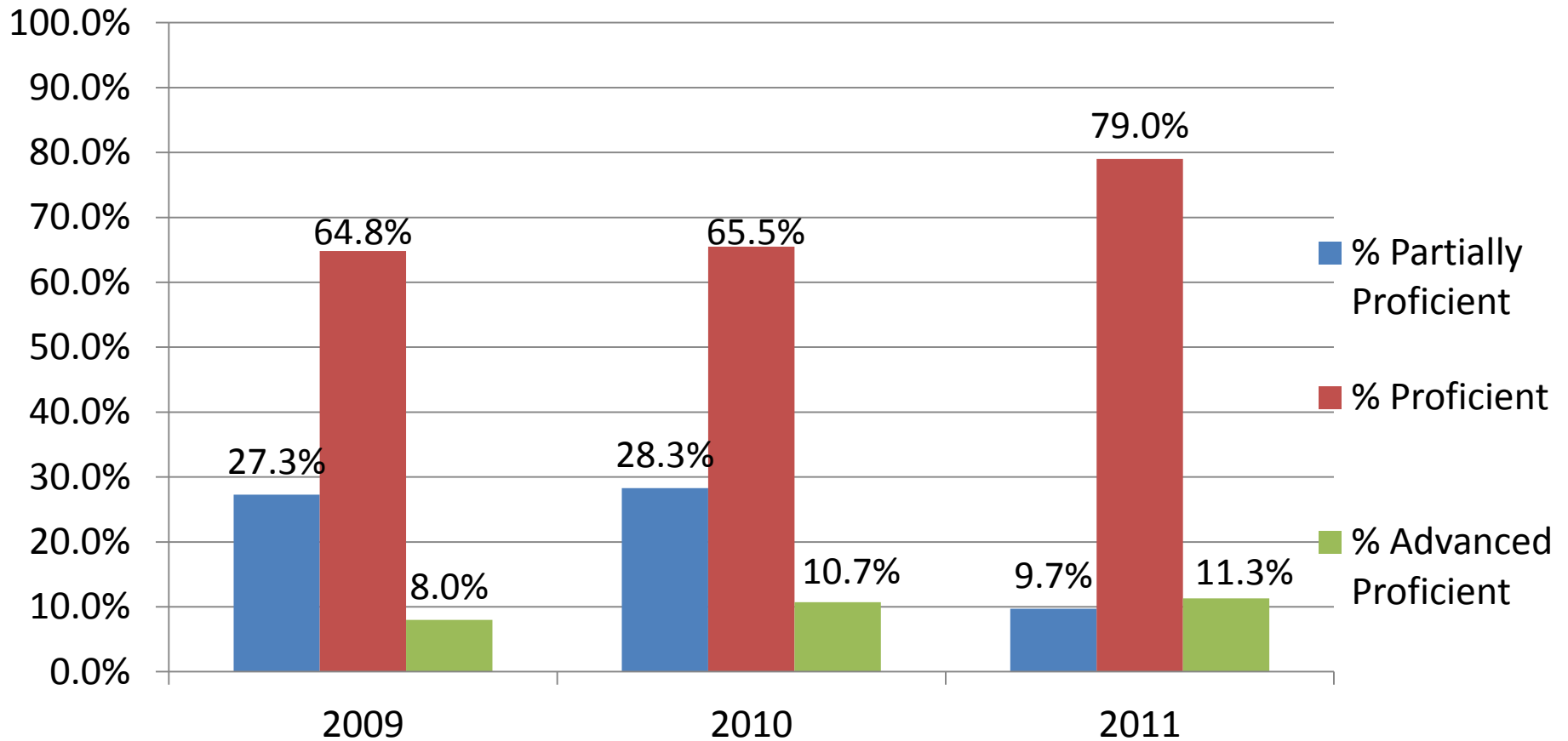
	2009	2010	2011
Partially Proficient	24.2%	21.3%	20.9%
Proficient	67.7%	75.3%	68.7%
Advanced Proficient	8.1%	3.4%	10.4%

NJ ASK Three Year Trend Roosevelt Grade 4 Language Arts Literacy



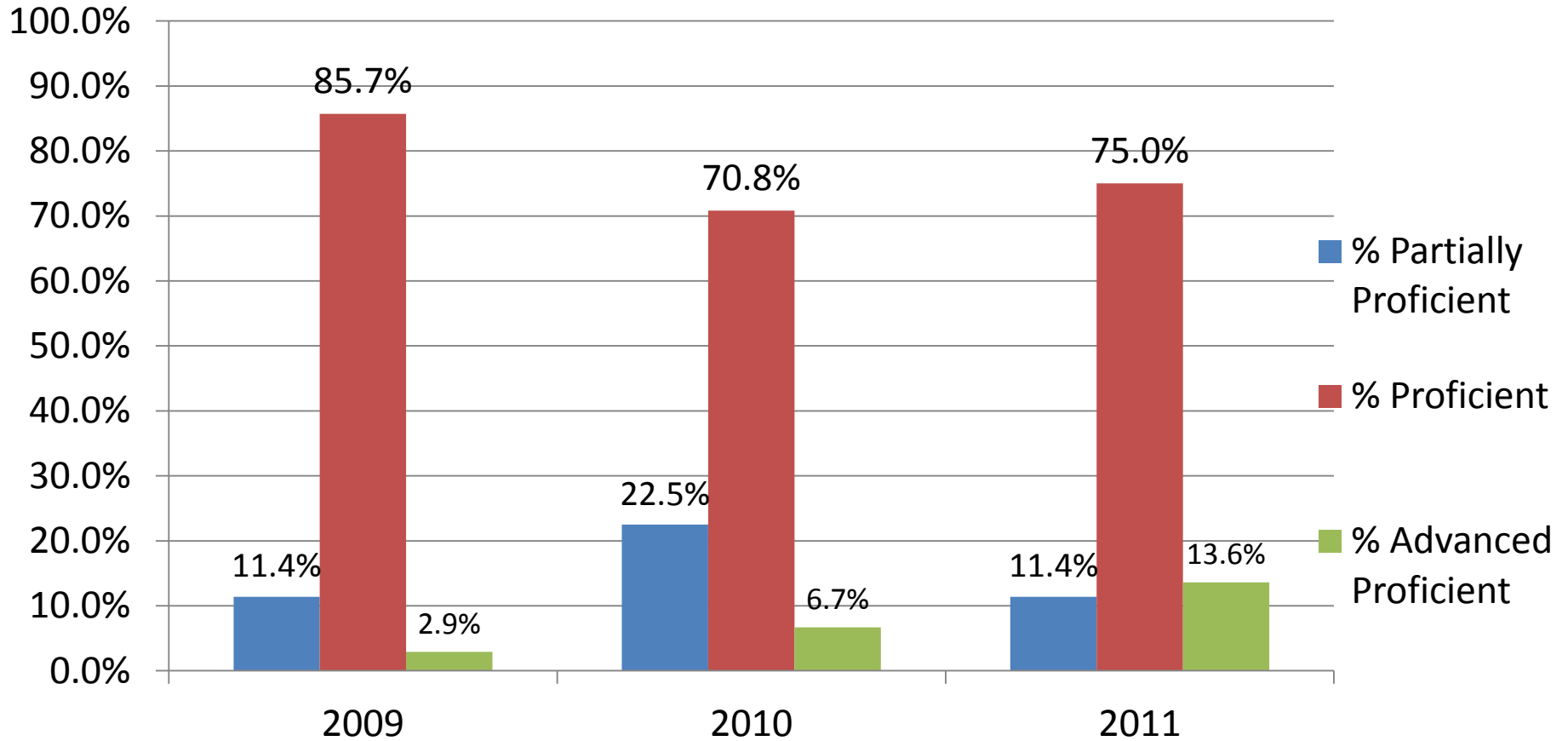
	2009	2010	2011
Partially Proficient	13.3%	17.5%	11.1%
Proficient	76.0%	66.7%	68.9%
Advanced Proficient	10.7%	15.9%	20.0%

NJ ASK Three Year Trend Roosevelt Grade 5 Language Arts Literacy



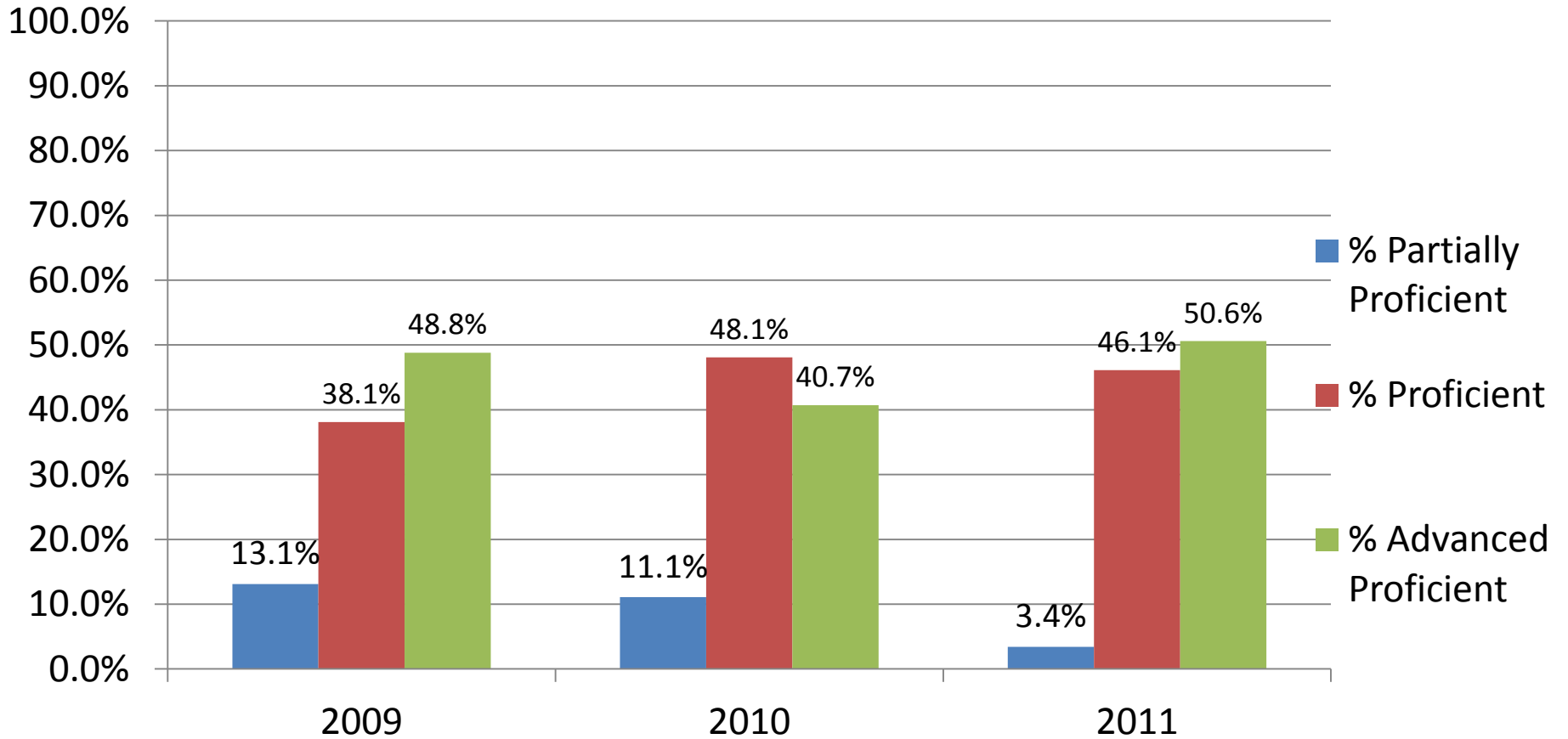
	2009	2010	2011
Partially Proficient	27.3%	28.3%	9.7%
Proficient	64.8%	65.5%	79.0%
Advanced Proficient	8.0%	10.7%	11.3%

NJ ASK Three Year Trend Roosevelt Grade 6 Language Arts Literacy



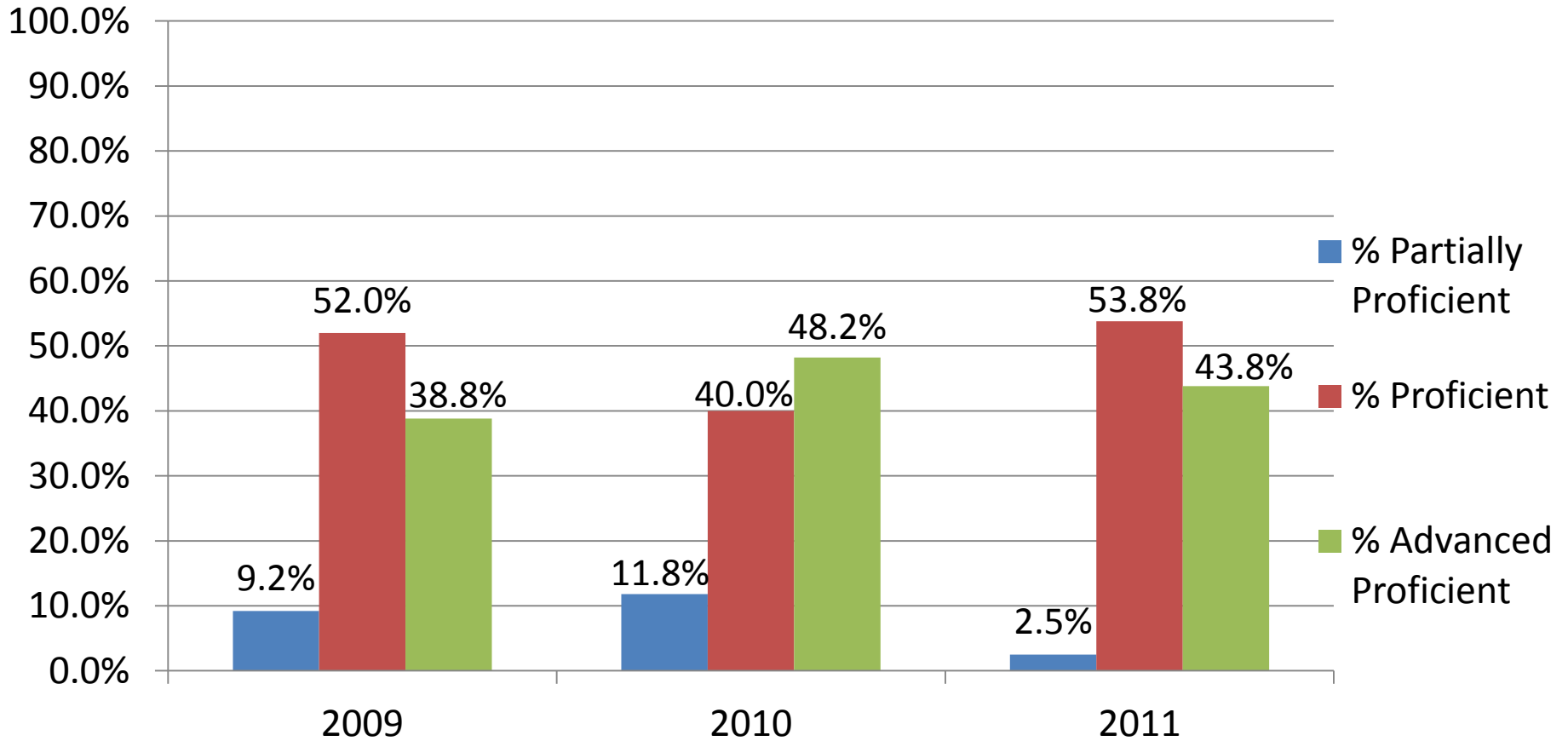
	2009	2010	2011
Partially Proficient	11.4%	22.5%	11.4%
Proficient	85.7%	70.8%	75.0%
Advanced Proficient	2.9%	6.7%	13.6%

NJ ASK Three Year Trend Cherry Hill Grade 3 Math



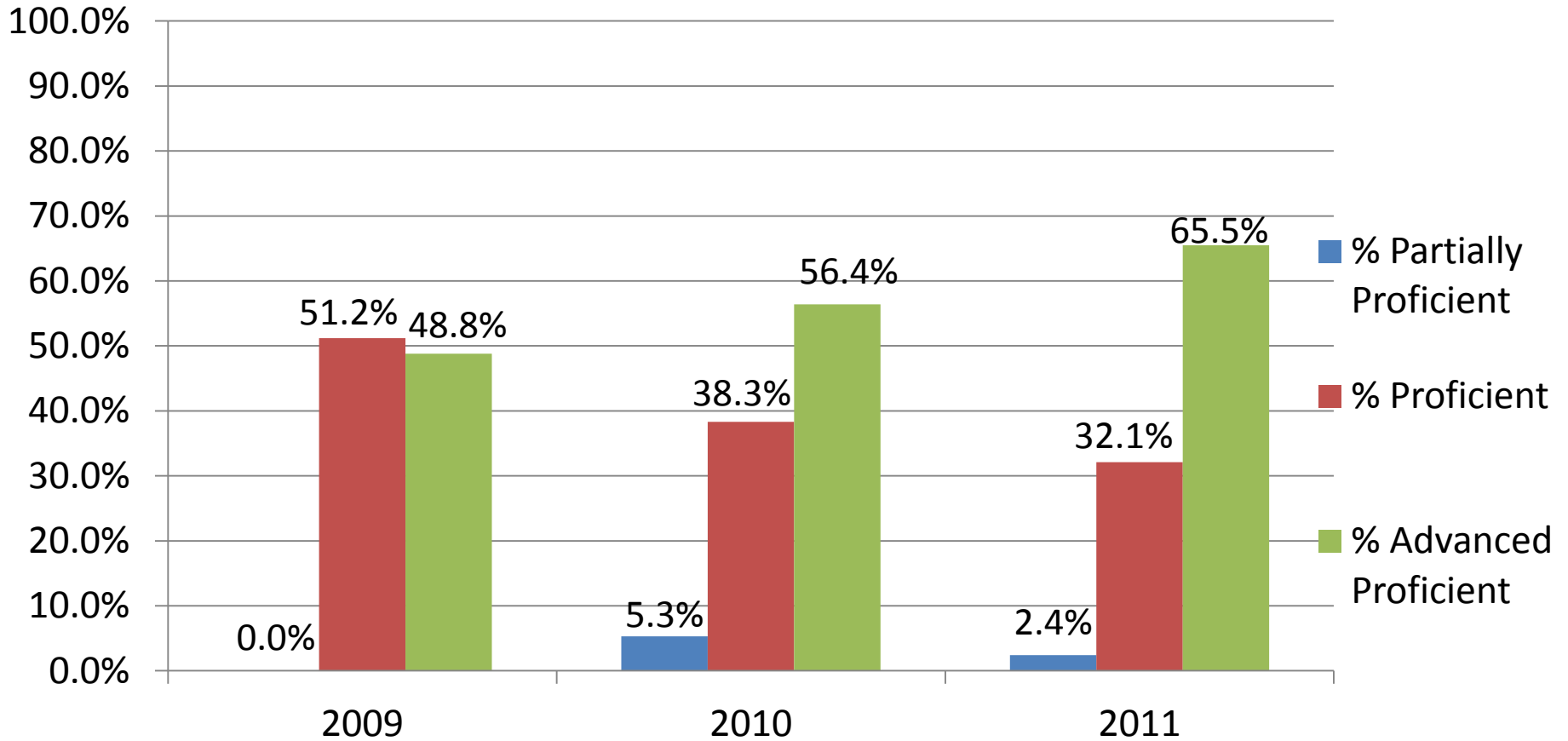
	2009	2010	2011
Partially Proficient	13.1%	11.1%	3.4%
Proficient	38.1%	48.1%	46.1%
Advanced Proficient	48.8%	40.7%	50.6%

NJ ASK Three Year Trend Cherry Hill Grade 4 Math



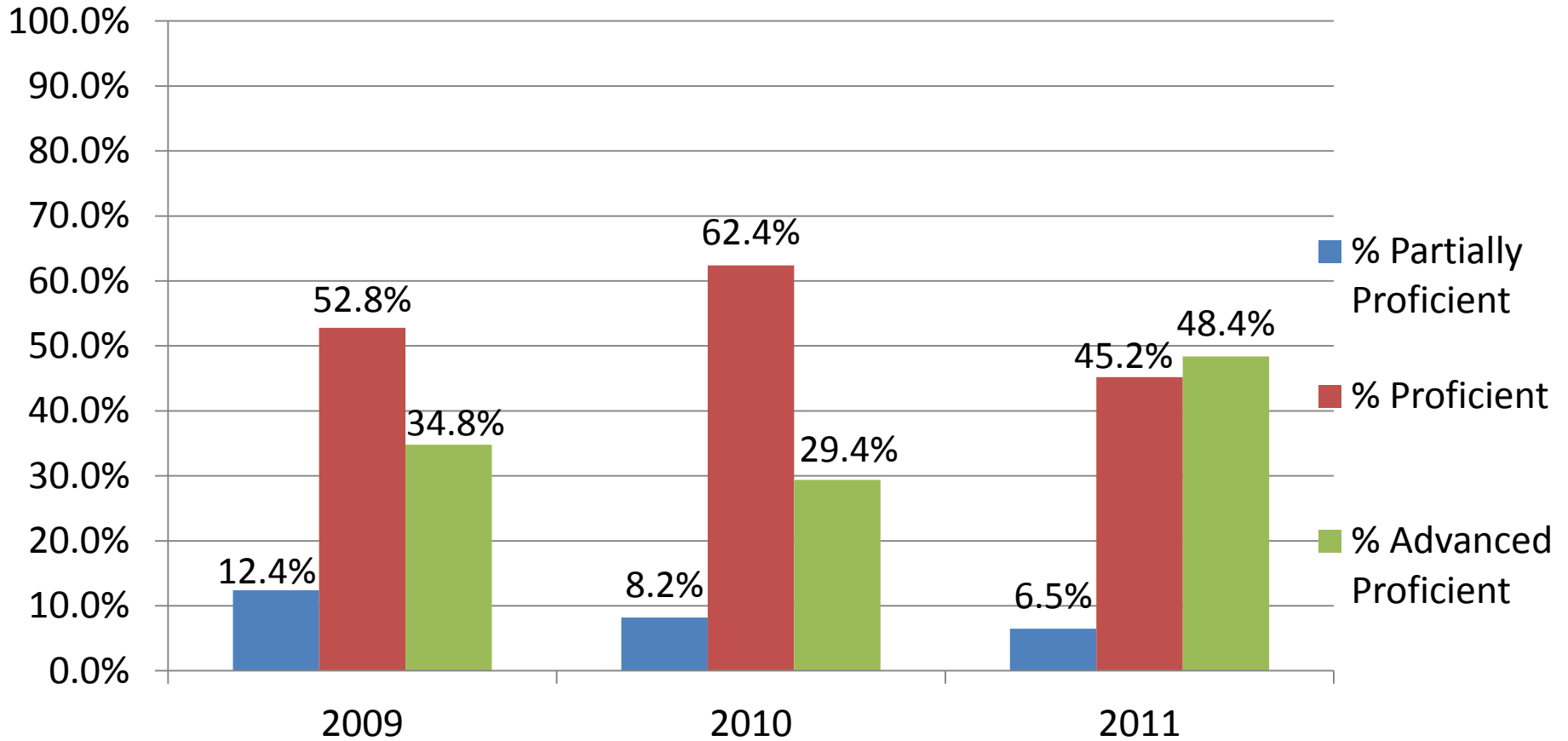
	2009	2010	2011
Partially Proficient	9.2%	11.8%	2.5%
Proficient	52.0%	40.0%	53.8%
Advanced Proficient	38.8%	48.2%	43.8%

NJ ASK Three Year Trend Cherry Hill Grade 5 Math



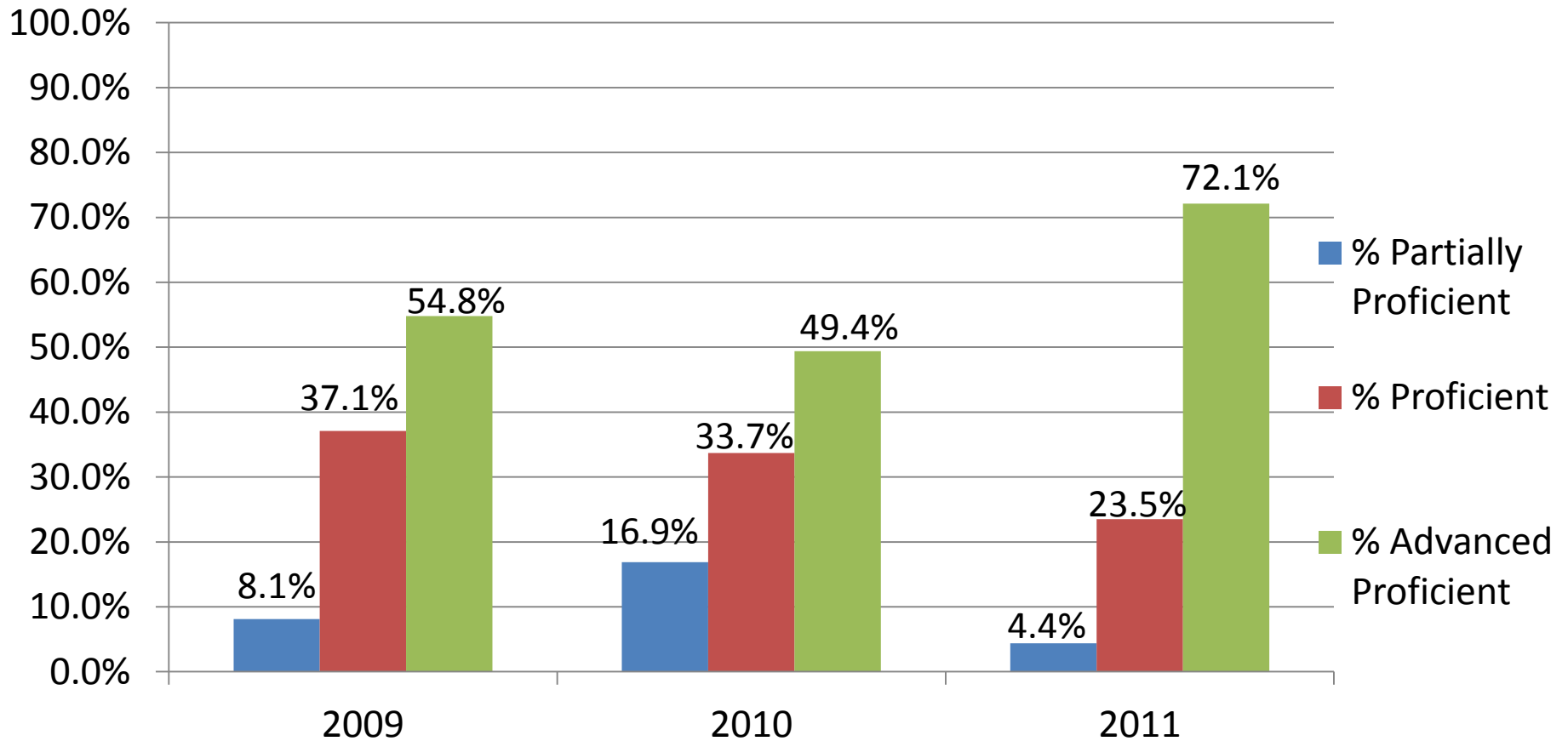
	2009	2010	2011
Partially Proficient	0.0%	5.3%	2.4%
Proficient	51.2%	38.3%	32.1%
Advanced Proficient	48.8%	56.4%	65.5%

NJ ASK Three Year Trend Cherry Hill Grade 6 Math



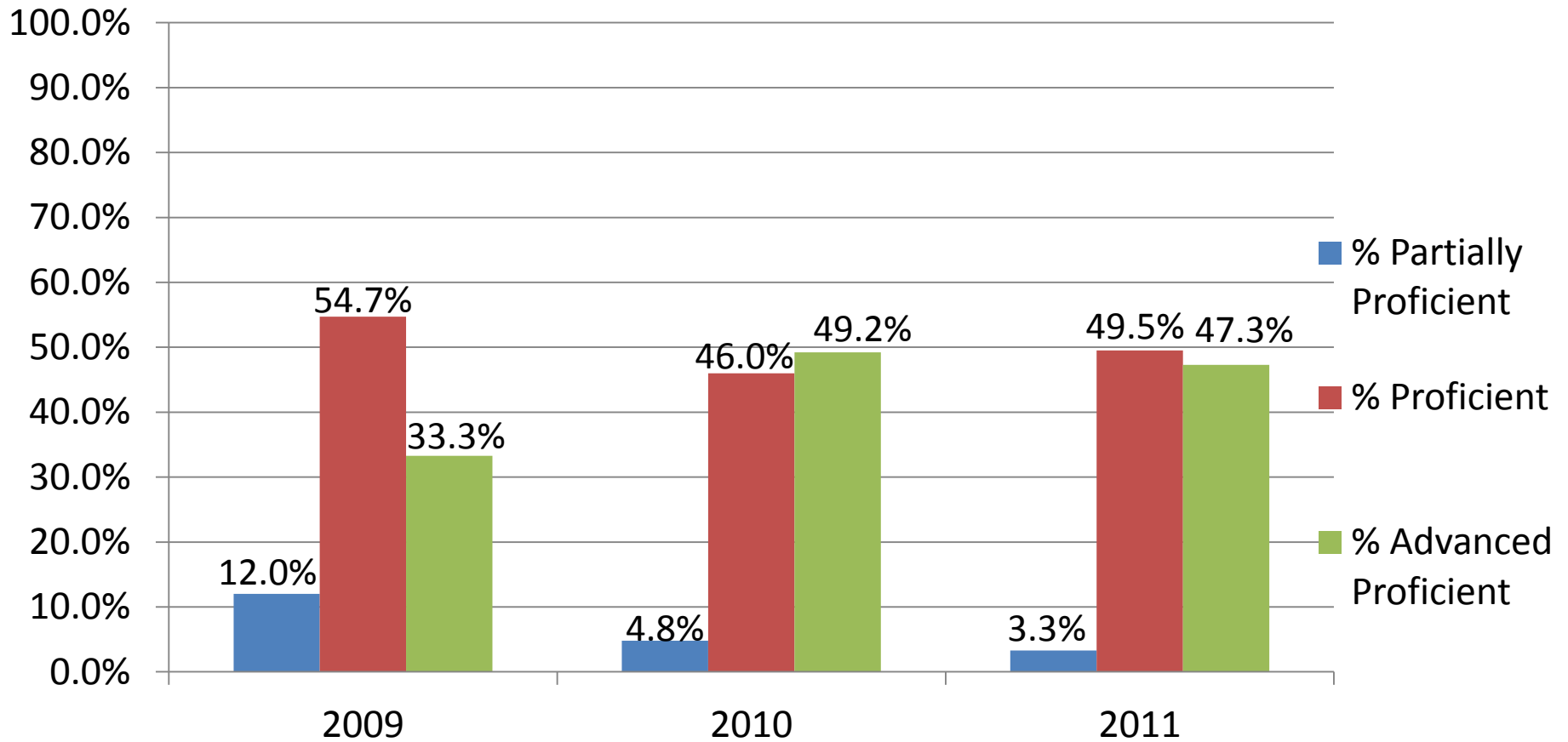
	2009	2010	2011
Partially Proficient	12.4%	8.2%	6.5%
Proficient	52.8%	62.4%	45.2%
Advanced Proficient	34.8%	29.4%	48.4%

NJ ASK Three Year Trend Roosevelt Grade 3 Math



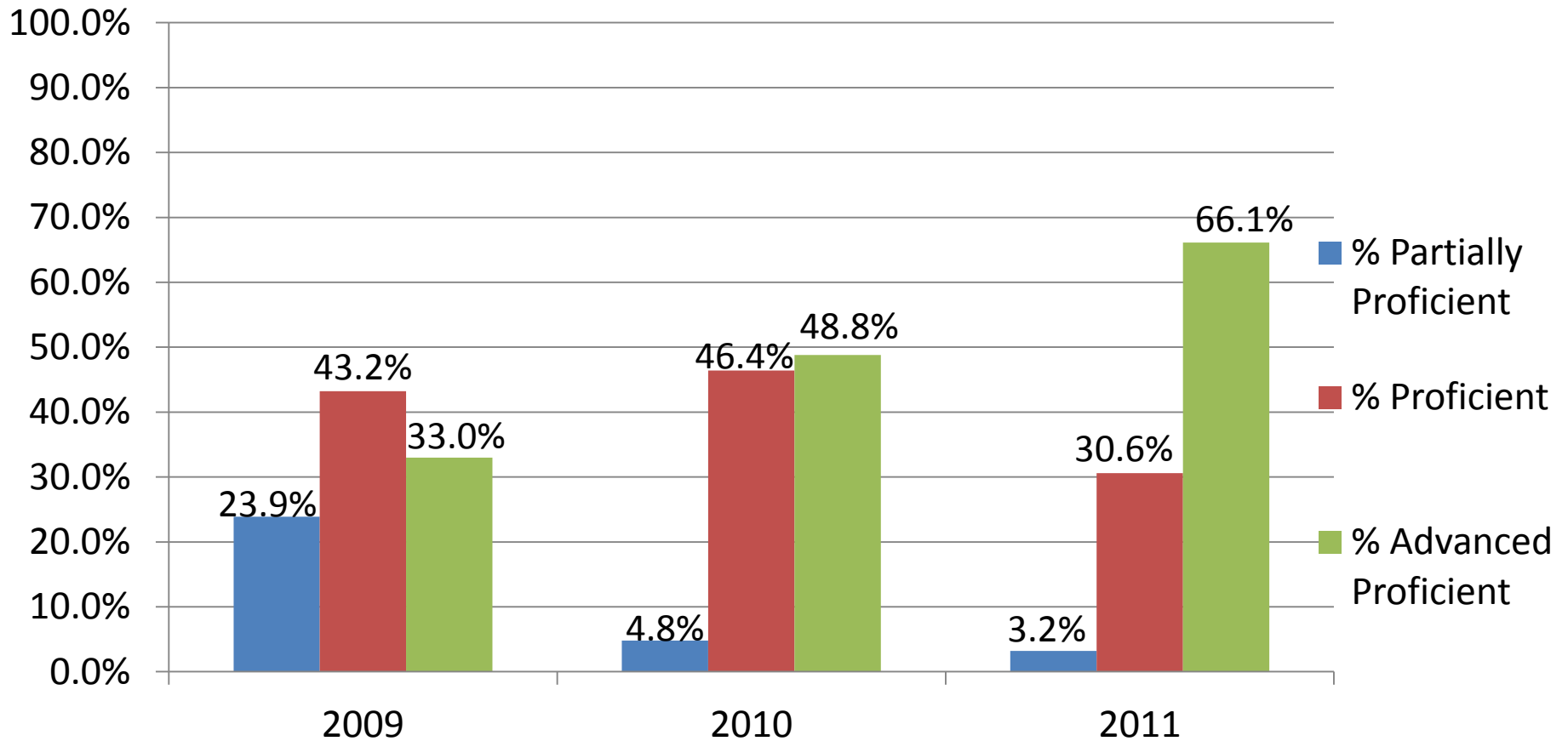
	2009	2010	2011
Partially Proficient	8.1%	16.9%	4.4%
Proficient	37.1%	33.7%	23.5%
Advanced Proficient	54.8%	49.4%	72.1%

NJ ASK Three Year Trend Roosevelt Grade 4 Math



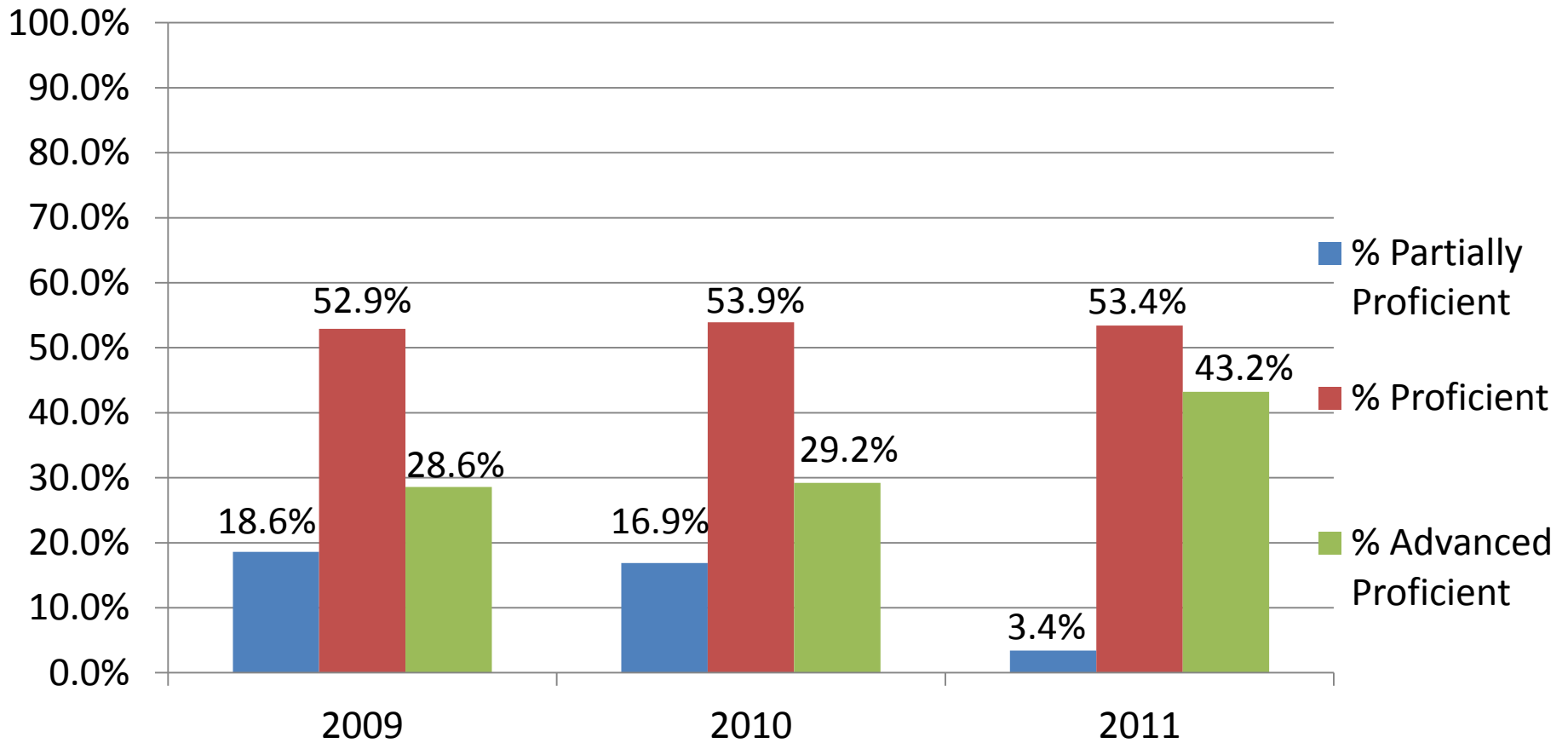
	2009	2010	2011
Partially Proficient	12.0%	4.8%	3.3%
Proficient	54.7%	46.0%	49.5%
Advanced Proficient	33.3%	49.2%	47.3%

NJ ASK Three Year Trend Roosevelt Grade 5 Math



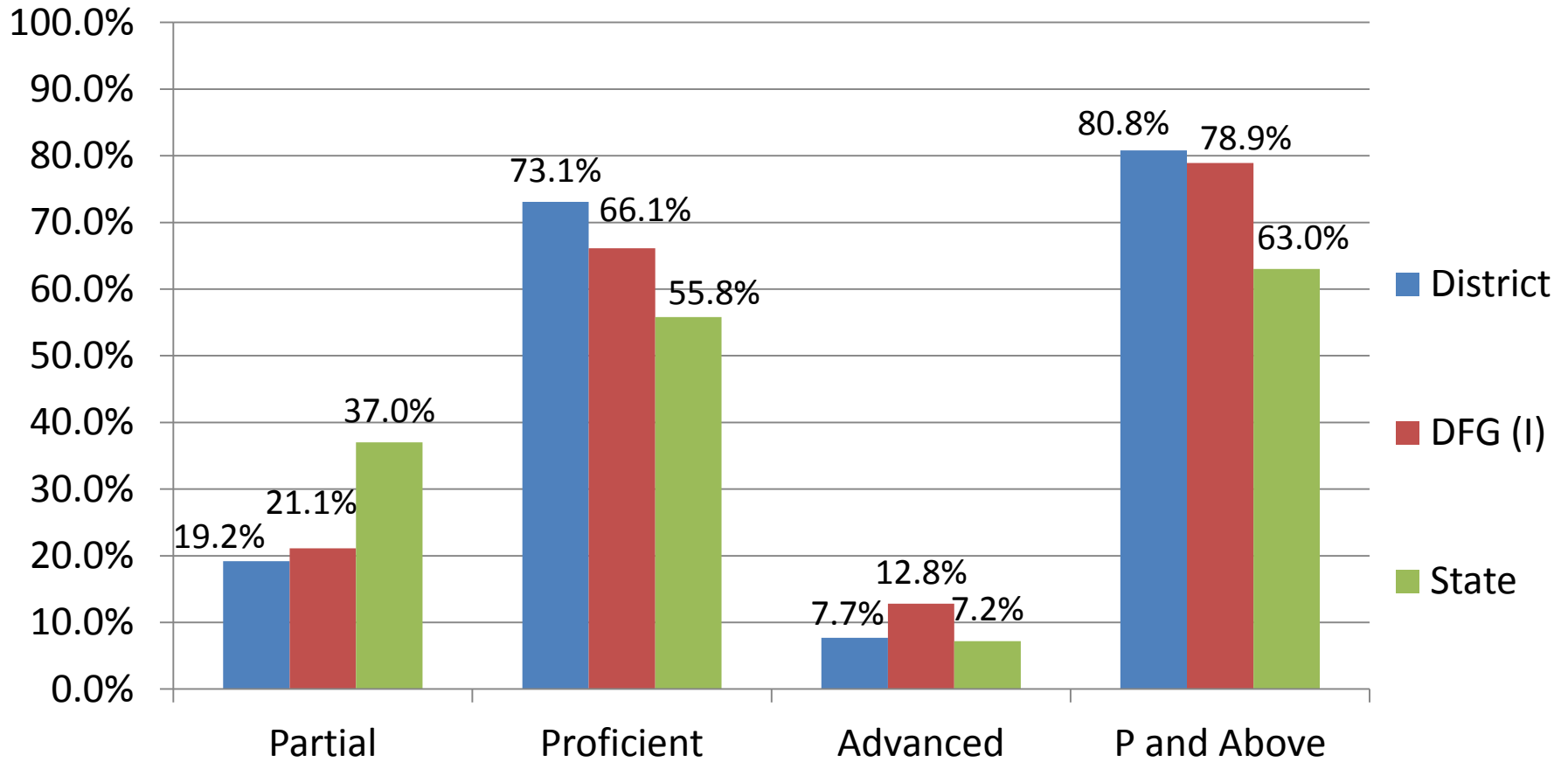
	2009	2010	2011
Partially Proficient	23.9%	4.8%	3.2%
Proficient	43.2%	46.4%	30.6%
Advanced Proficient	33.0%	48.8%	66.1%

NJ ASK Three Year Trend Roosevelt Grade 6 Math

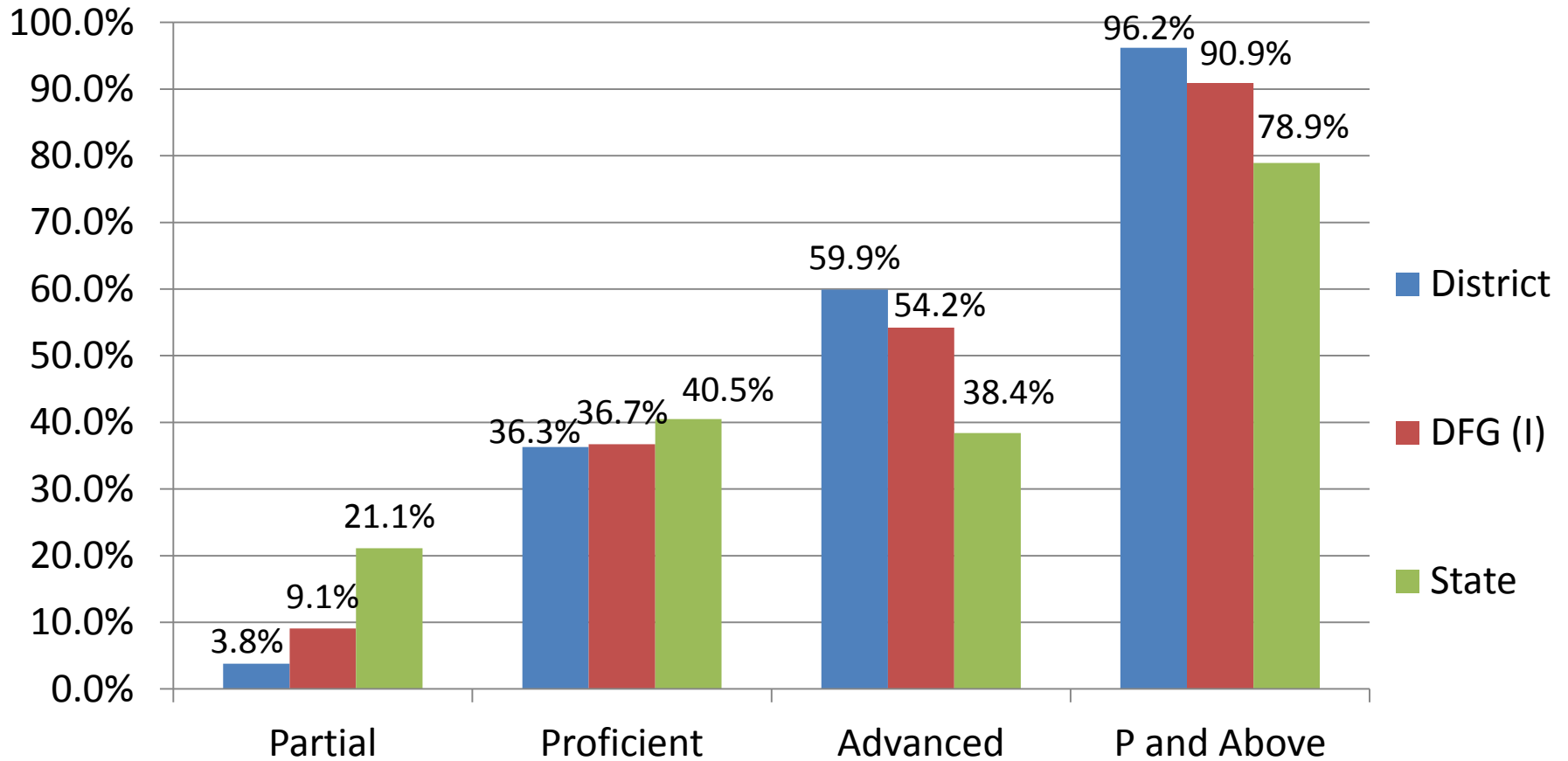


	2009	2010	2011
Partially Proficient	18.6%	16.9%	3.4%
Proficient	52.9%	53.9%	53.4%
Advanced Proficient	28.6%	29.2%	43.2%

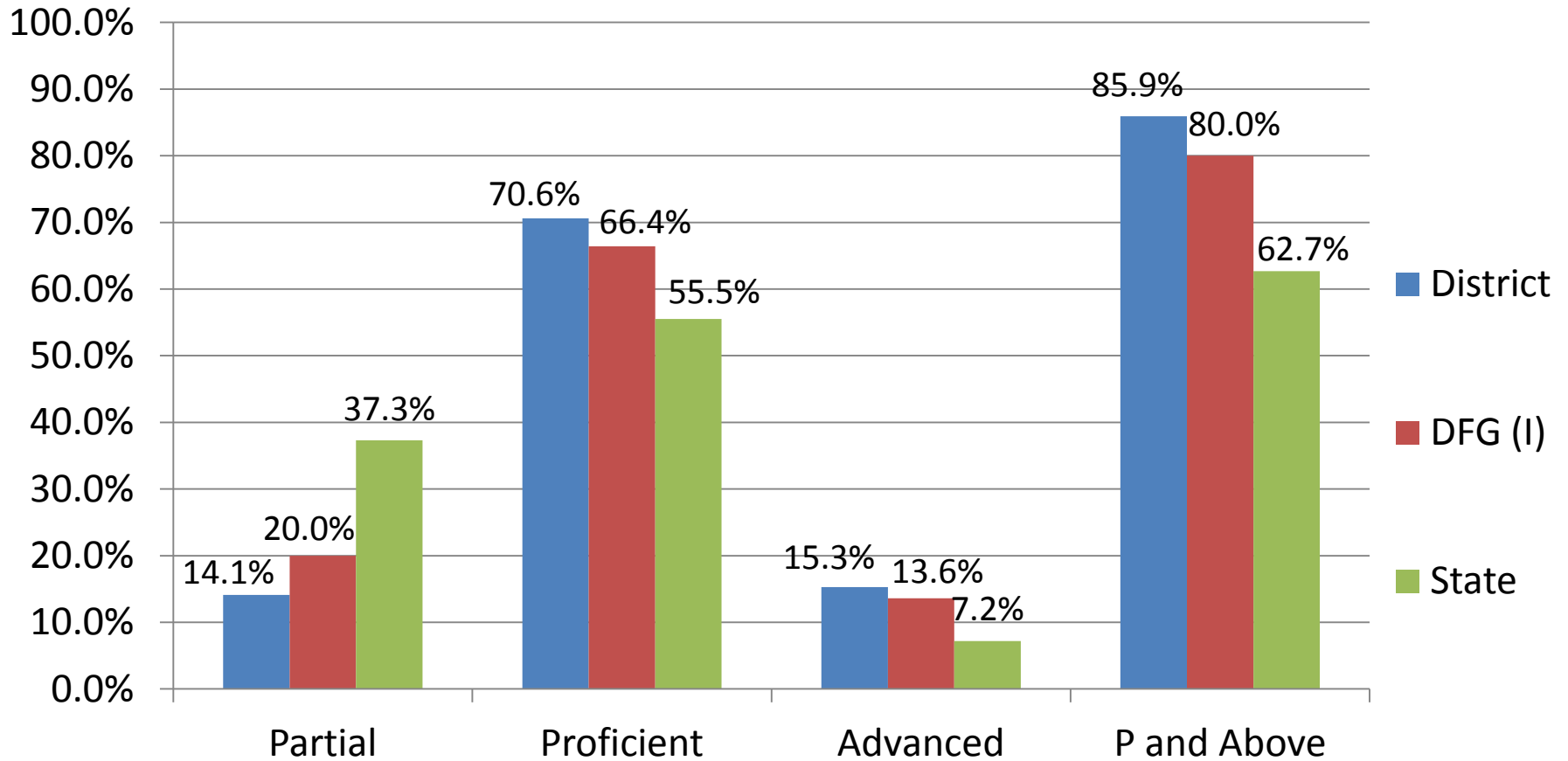
Grade 3 LAL 2011



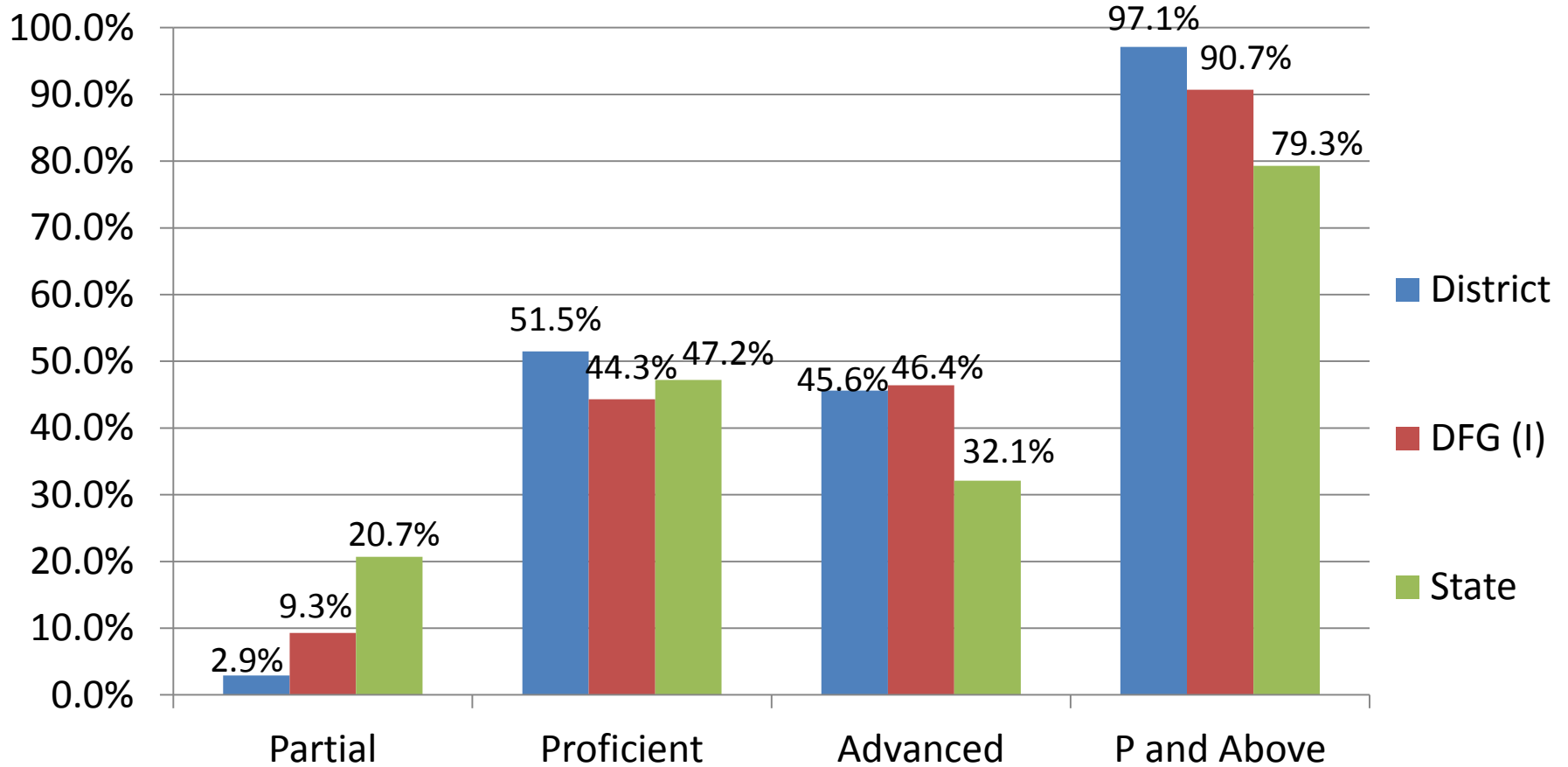
Grade 3 Math 2011



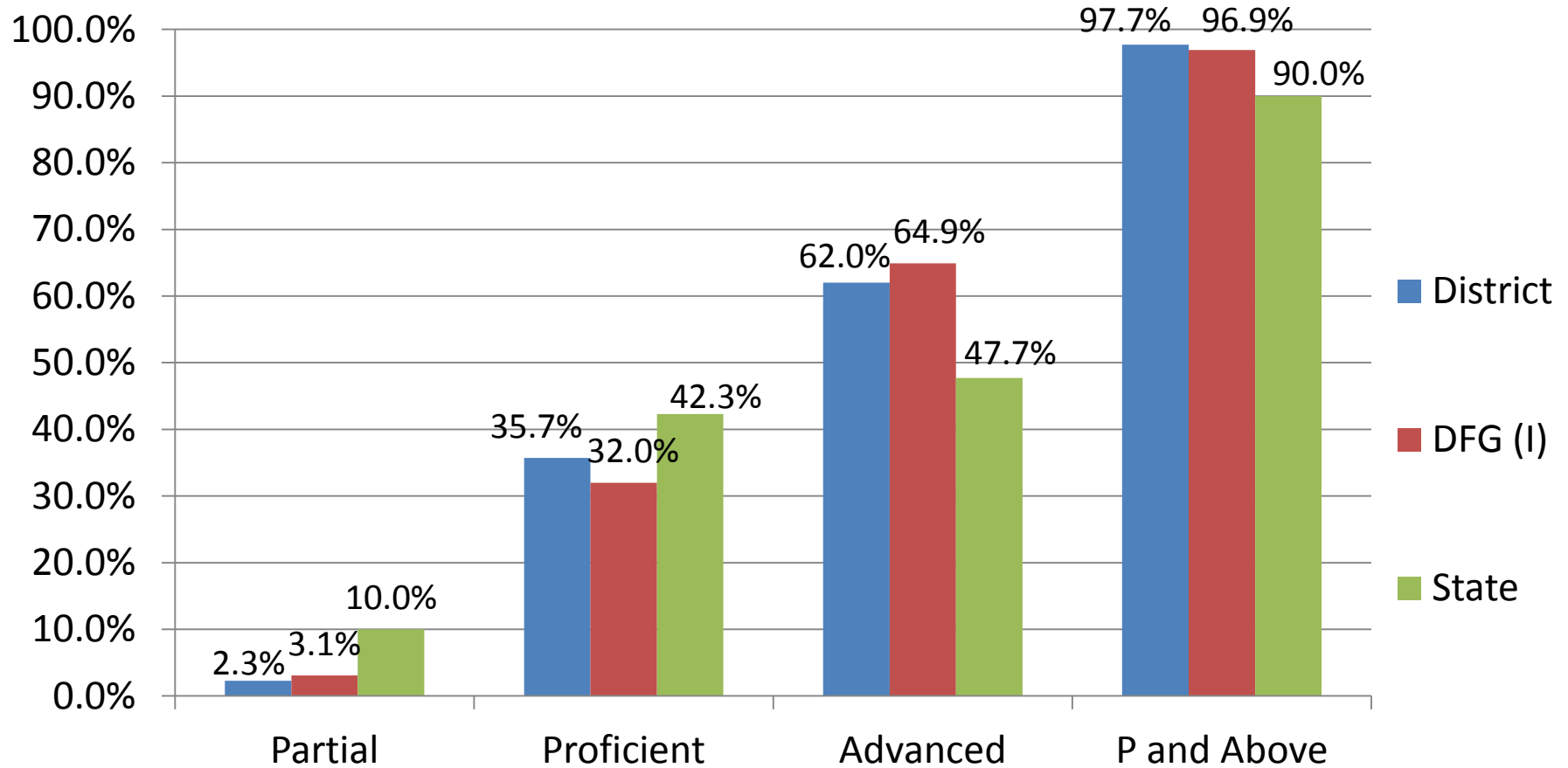
Grade 4 LAL 2011



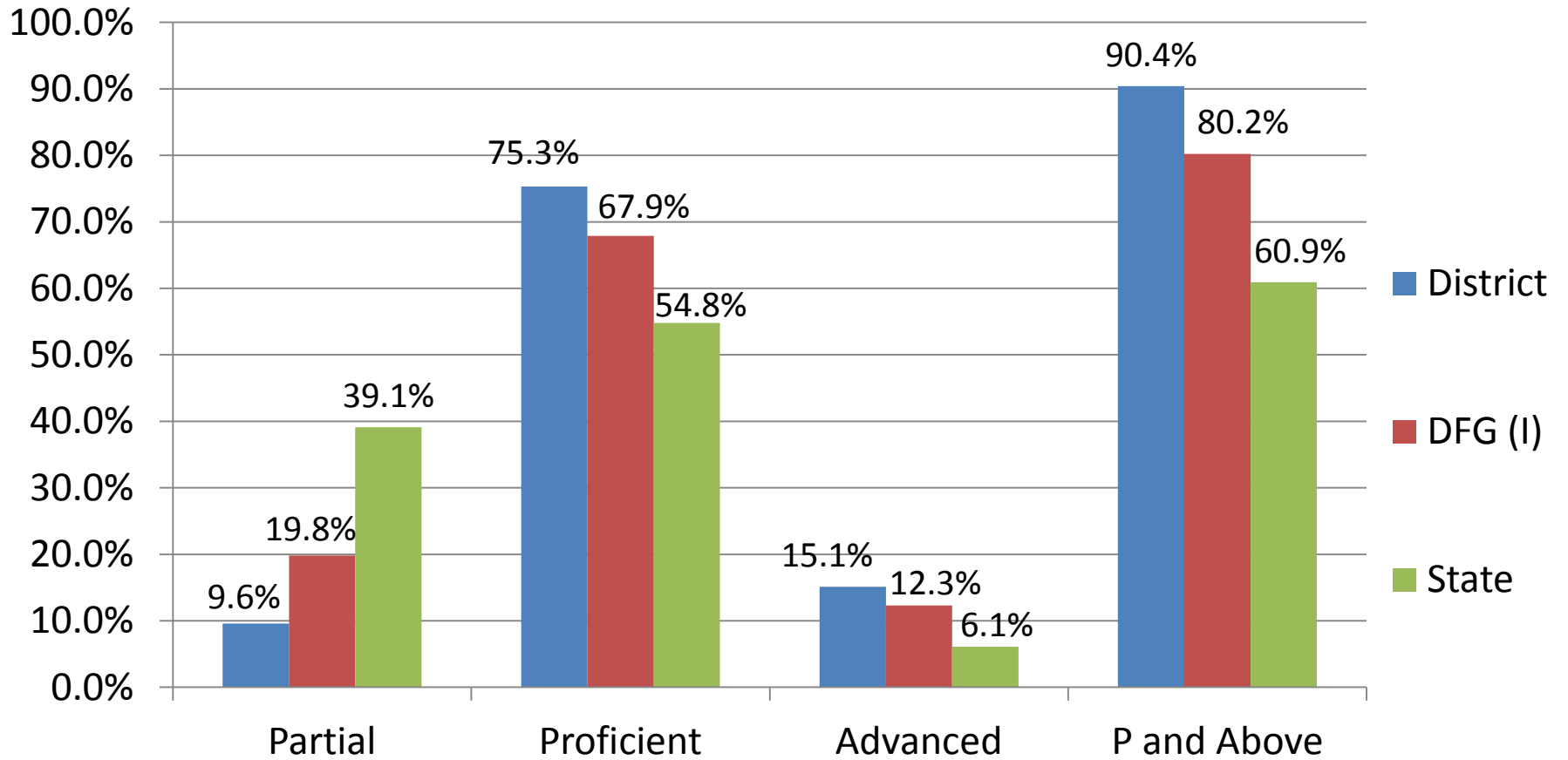
Grade 4 Math 2011



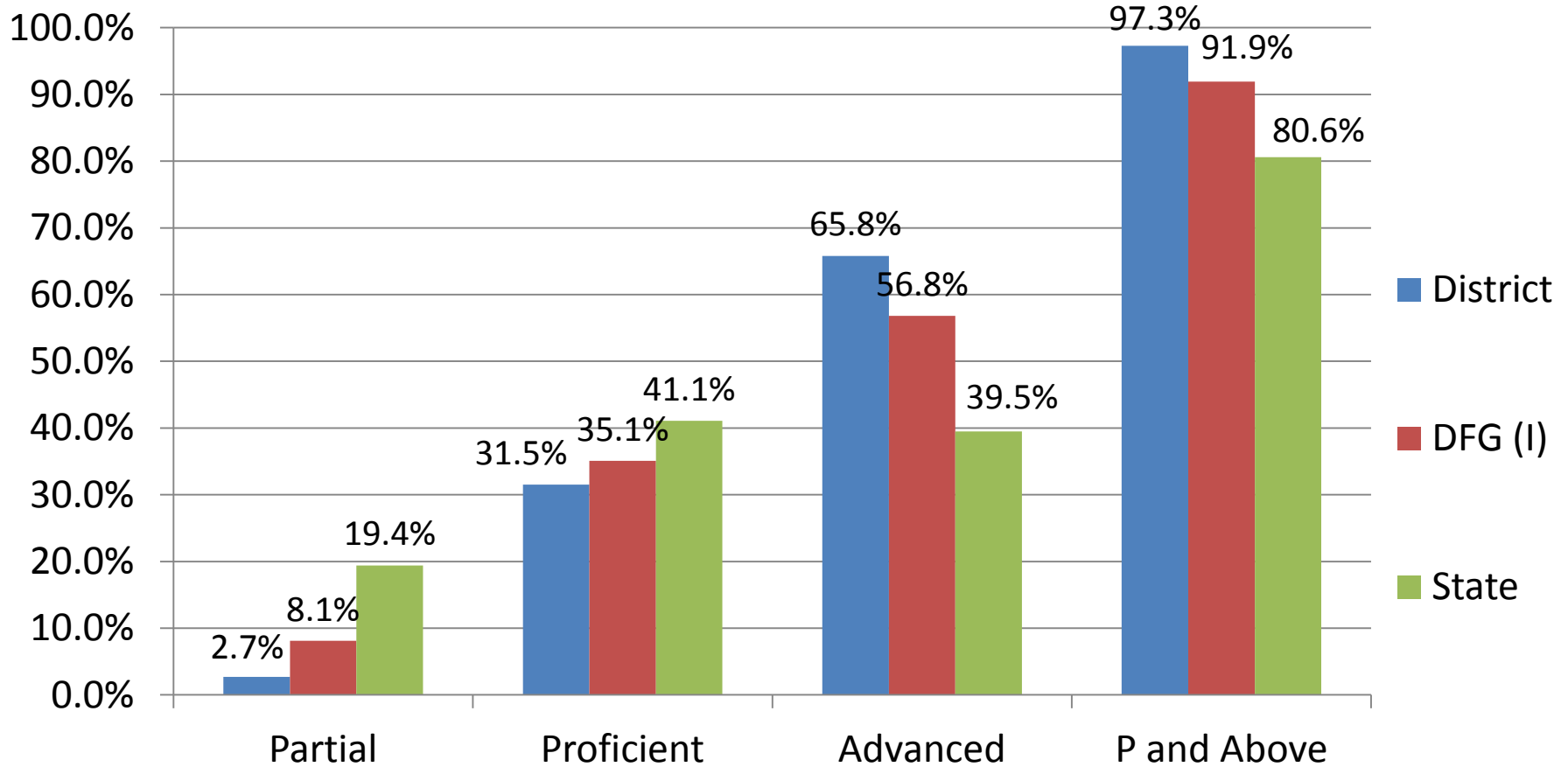
Grade 4 Science 2011



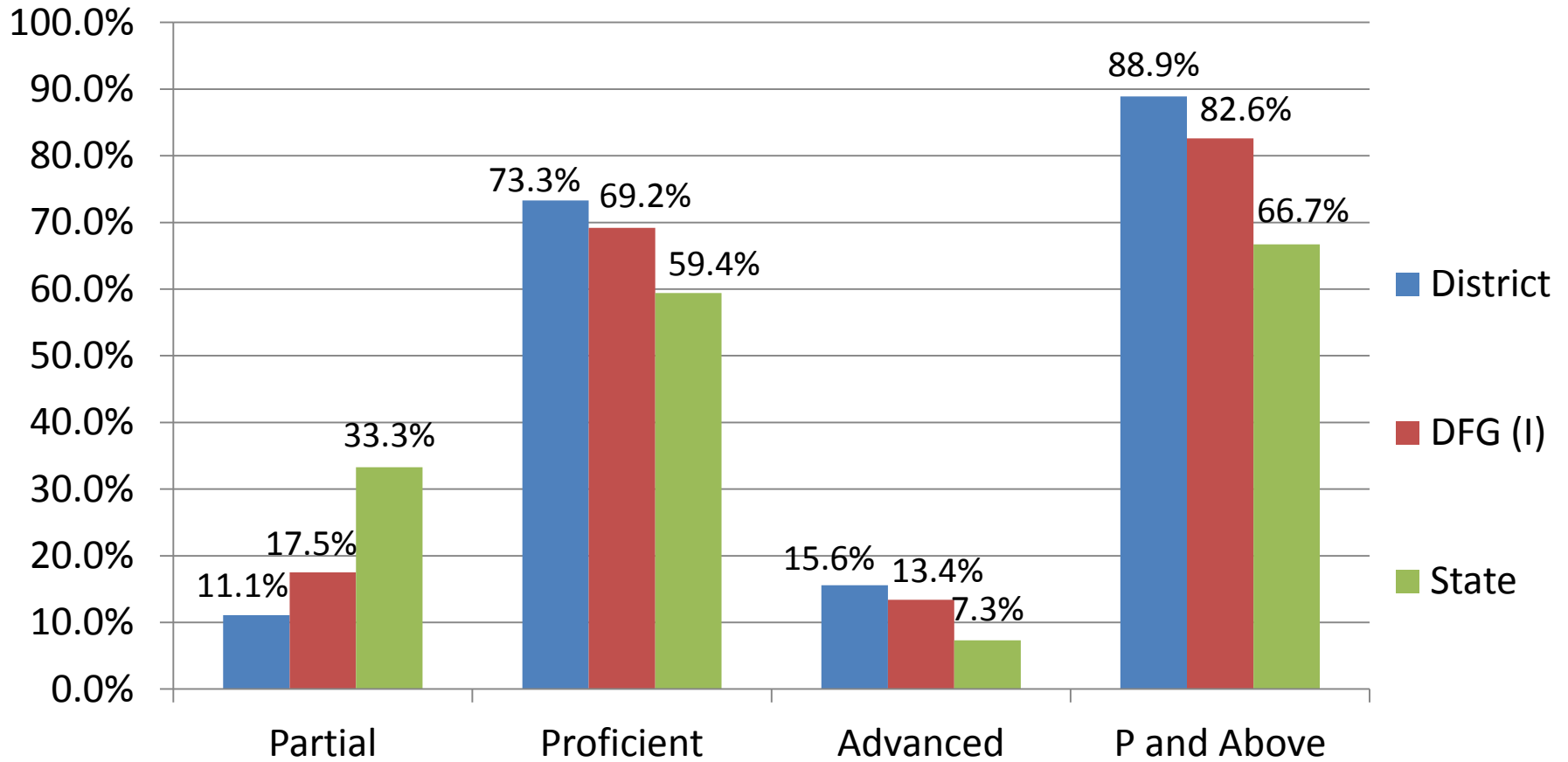
Grade 5 LAL 2011



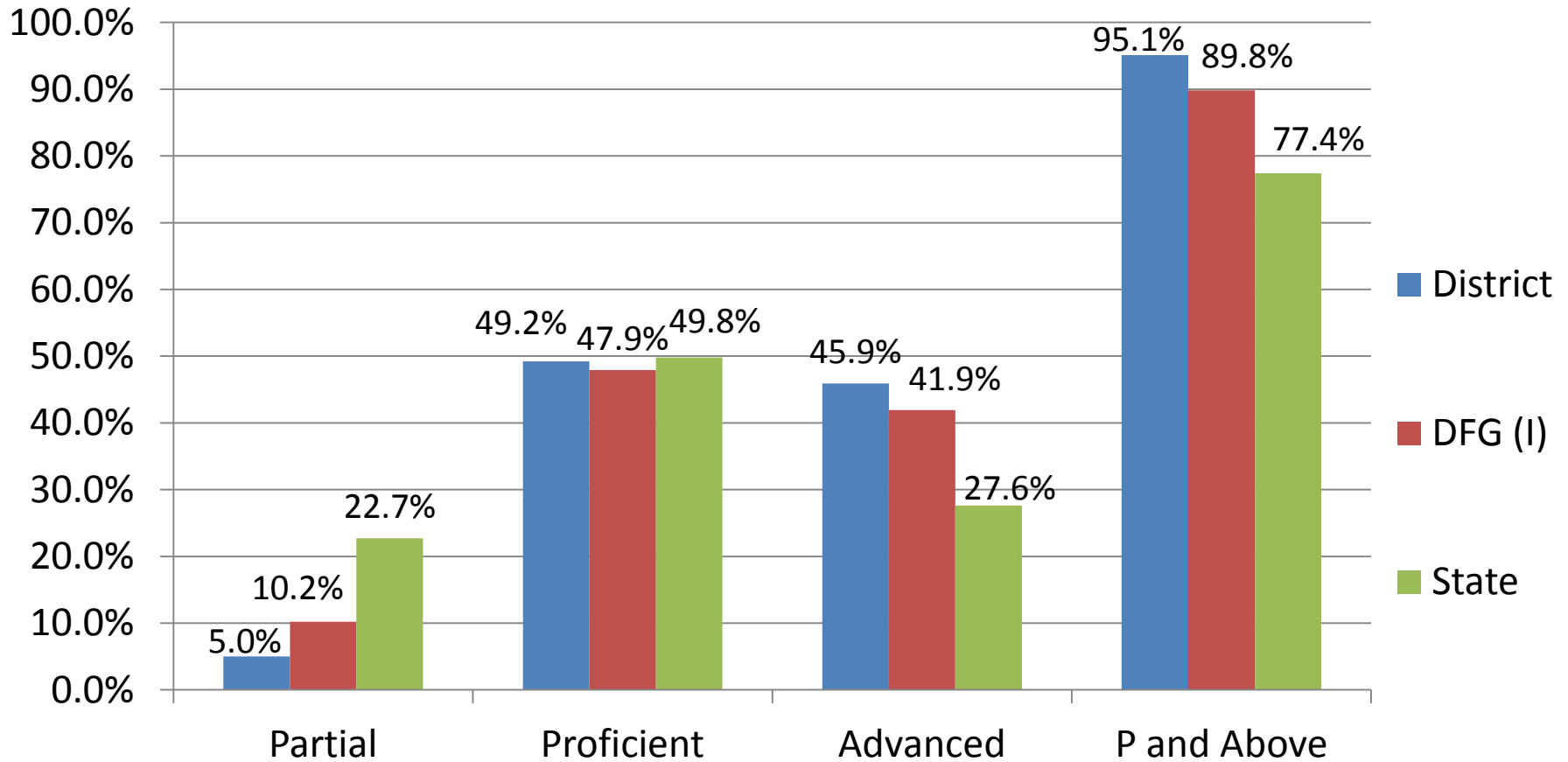
Grade 5 Math 2011



Grade 6 LAL 2011



Grade 6 Math 2011



Trends of Student Performance Grades 3 - 6

- **In Language Arts and Math-** even though state benchmarks for student achievement increased, this year River Edge students surpassed benchmarks for AYP and outperformed the District Factor Group!

Grade 3

- **Language Arts** scores of combined Proficient and Above Proficient increased dramatically by 15% from 65.8% (2010) to 80.0%
- **Math-** 2011 scores showed a significant 15% increase in **Advanced Proficient** from 2010 scores

Trends of Student Performance Grades 3 - 6

Grade 4

- In **Science**, 97.7% of our students scored in the combined Proficient and Advanced Proficient category!
- In **Language Arts**, scores dropped to the lowest Partially Proficient percentage in 3 years as students scoring Proficient increased 15% from last year.
- In **Math**, 97.1% of our students scored in the combined Proficient and Advanced Proficient category! The number of Partially Proficient students continues on a steady, impressive decline from 10.4% to 8.8% and now at 2.9%.

Trends of Student Performance Grades 3 - 6

Grade 5

- In Language Arts- Proficient scores increased by 10% and Partially Proficient scores decreased by 10% when compared to 2010.
- In Math- 65.8% of students reached Advanced Proficiency, an impressive 13% increase! Partially Proficiency reached an all time low at 2.7%.

Grade 6

- In Language Arts- students reached an impressive 3 year high in the Advanced Proficient category, increasing by 10%.
- In Math, Advanced Proficiency increased by a significant 16%, and Partially Proficient scores decreased 7.5%. An impressive 95.1% of students scored combined Proficient and Above Proficient!